

Production Workshop

生产车间



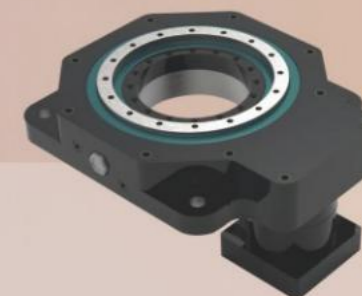
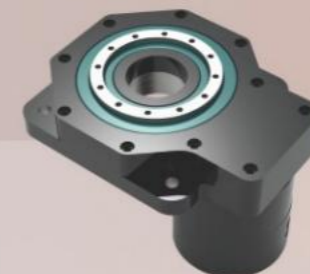
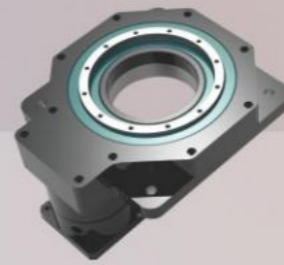
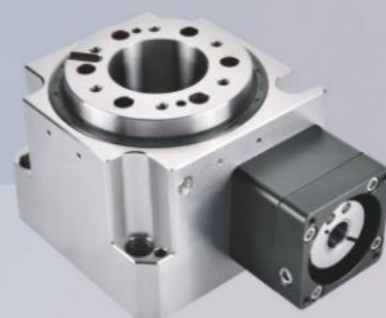
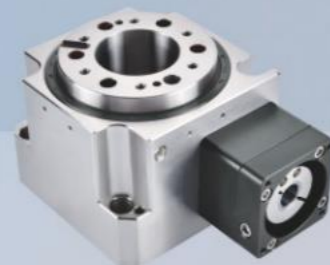
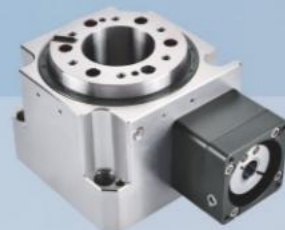
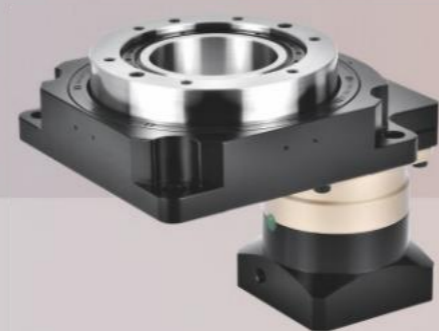
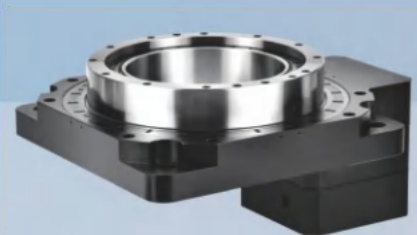
公司拥有成熟全面的分度转台技术，可以根据客户需求进行开发和生产，可编程伺服转台、机械式分度转台等，产品覆盖各种行业：金属成型、汽车、航空、包装、建筑、丝移印、机床等。

The company has mature and comprehensive indexing turntable technology, which can be developed and produced according to customer needs. Programmable servo turntables, mechanical indexing turntables, and other products cover various industries: metal forming, automotive, aviation, packaging, construction, silk transfer printing, machine tools, etc.



Product Show

产品组合展示



Contents

目录索引

TN
Series



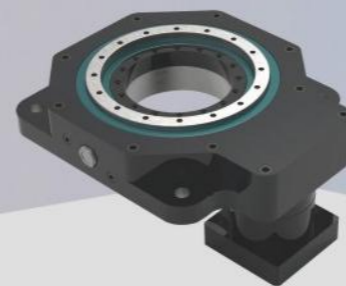
Page 01

TY
Series



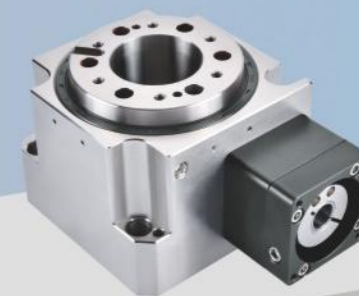
Page 21

TU
Series



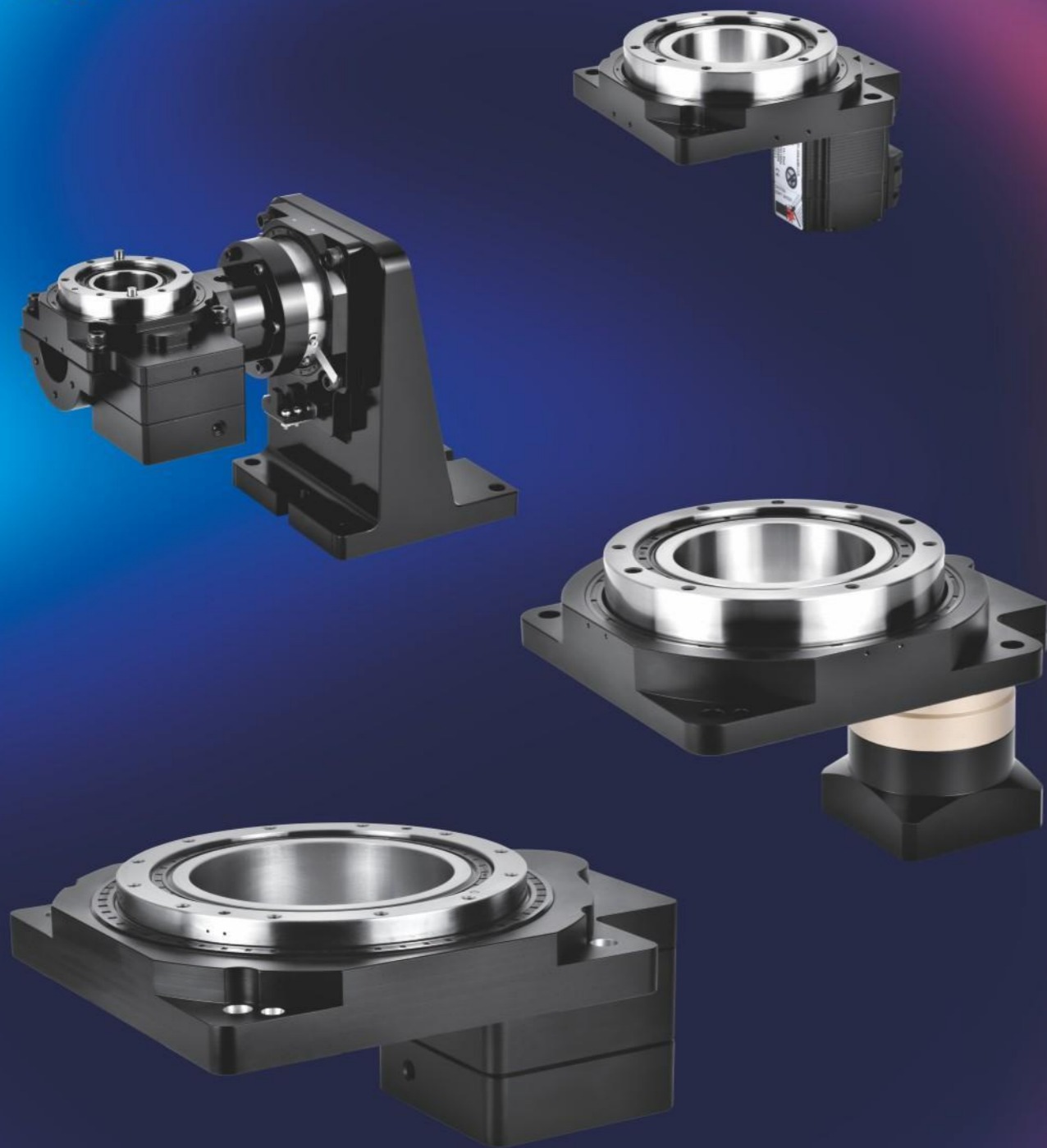
Page 26

THD
Series

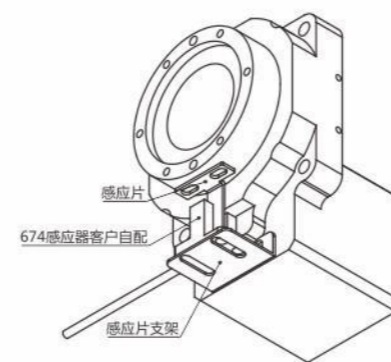
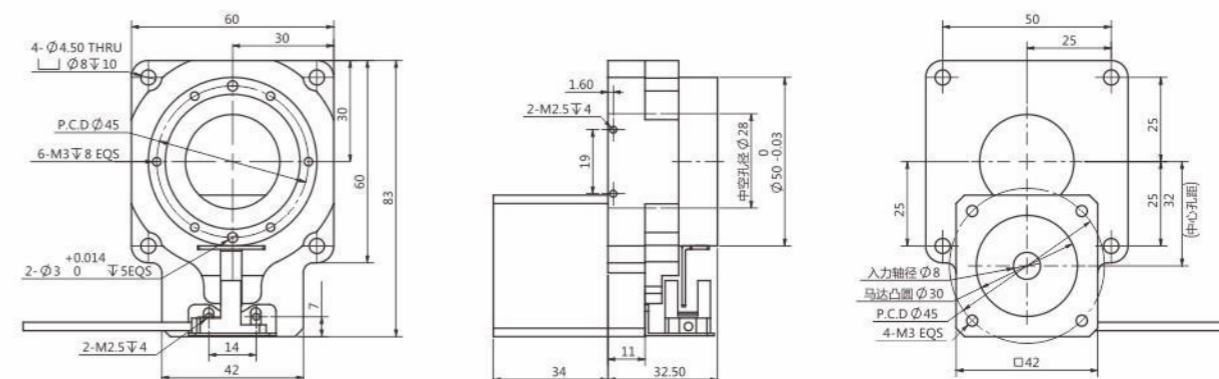


Page 29

TN Series

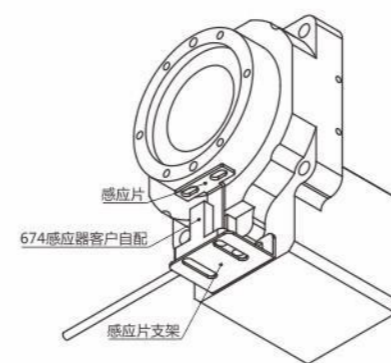
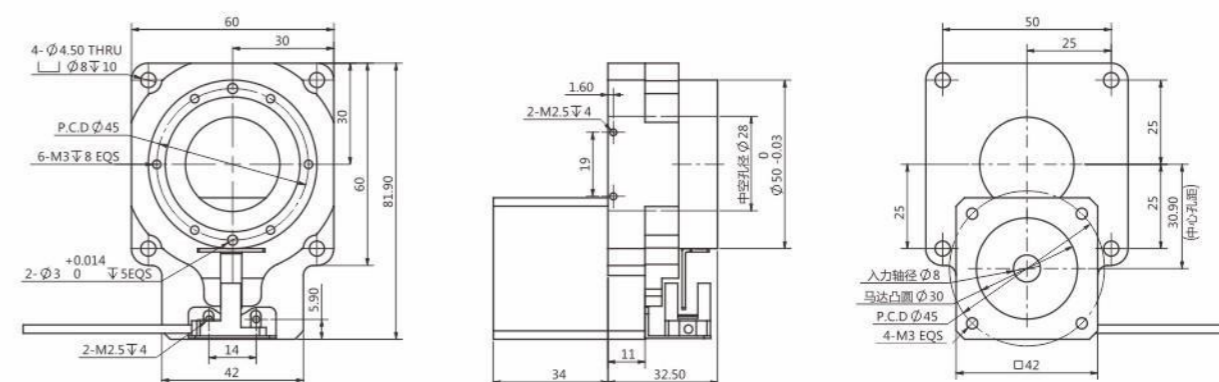


TN60-5K



| | | | |
|-------------------------------|------------------------|---------------------------------|--------------------------------|
| Rotating platform bearing | crossed roller bearing | Motor model | 42 stepper motor 100W servo |
| Reduction ratio | 1:5 | Allowable axial load | 200N |
| Allowable input torque | ≤5Nm | Rotating platform flatness | ±0.01mm |
| Allowable platform speed | 100rpm | Rotating platform concentricity | ±0.01mm |
| Repeated positioning accuracy | ±15arcsec | Precision life | 20000hrs |
| Positional accuracy | ±30arcsec | Protection level | IP40 |

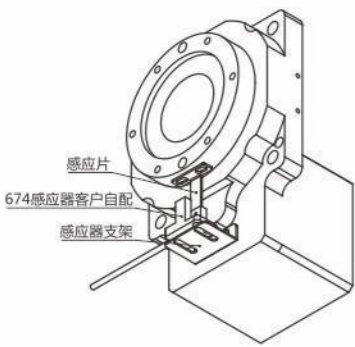
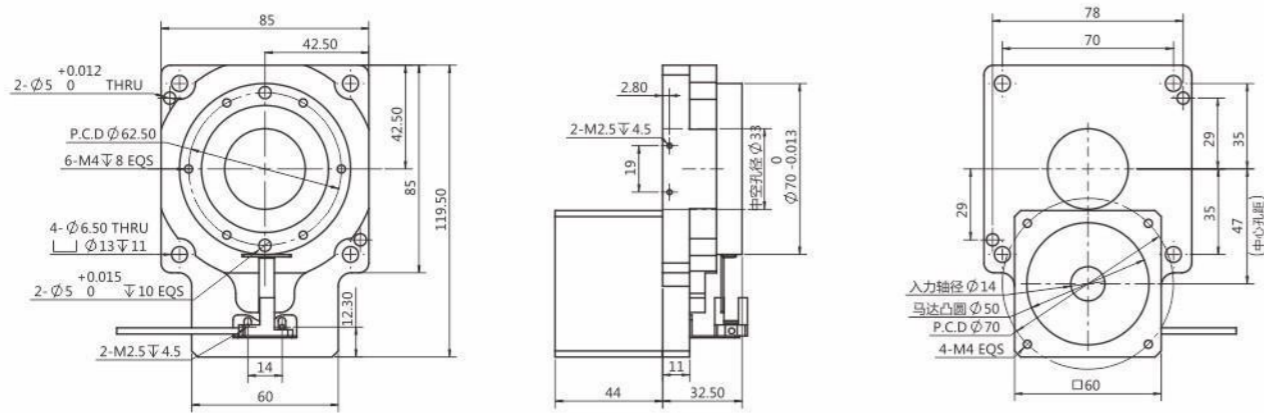
TN60-10K



| | | | |
|-------------------------------|------------------------|---------------------------------|--------------------------------|
| Rotating platform bearing | crossed roller bearing | Motor model | 42 stepper motor 100W servo |
| Reduction ratio | 1:10 | Allowable axial load | 200N |
| Allowable input torque | ≤5Nm | Rotating platform flatness | ±0.01mm |
| Allowable platform speed | 100rpm | Rotating platform concentricity | ±0.01mm |
| Repeated positioning accuracy | ±15arcsec | Precision life | 20000hrs |
| Positional accuracy | ±30arcsec | Protection level | IP40 |

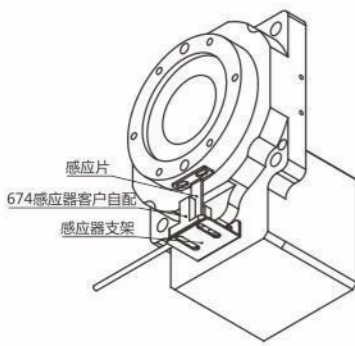
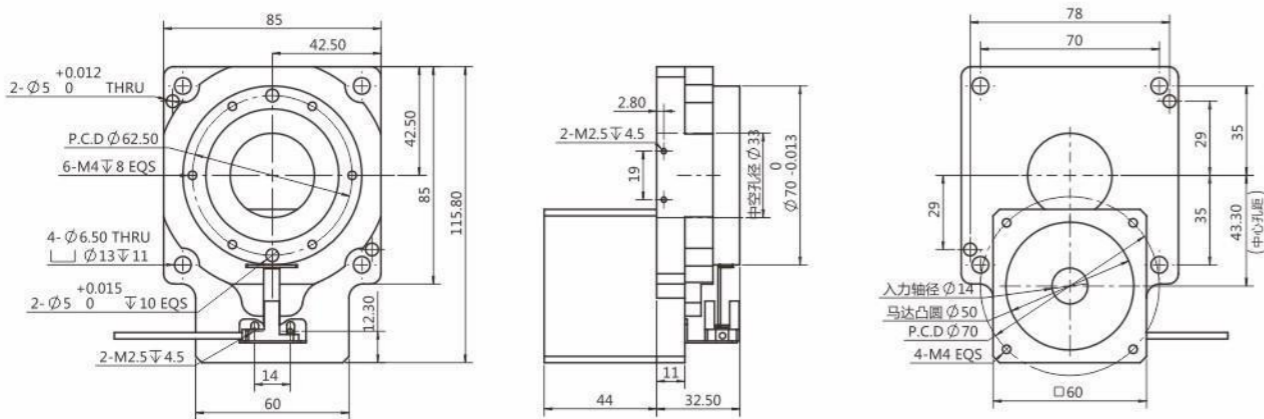
温馨提示：盘面输出转速高于100rpm/min.请订货前说明

TN85-5K



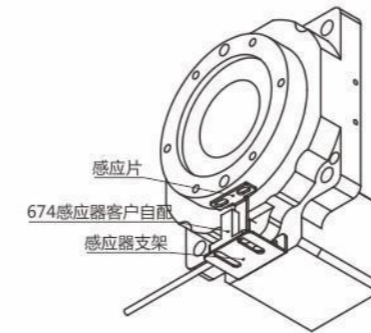
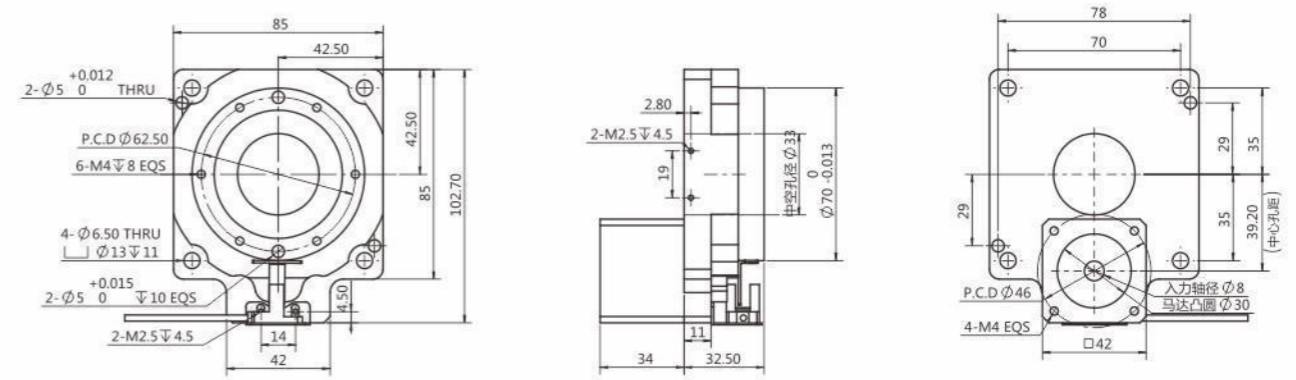
| | | | |
|-------------------------------|------------------------|---------------------------------|------------------------------------|
| Rotating platform bearing | crossed roller bearing | Motor model | 57 stepper motor 60 frame servo |
| Reduction ratio | 1:5 | Allowable axial load | 400N |
| Allowable input torque | ≤45Nm | Rotating platform flatness | ±0.01mm |
| Allowable platform speed | 100rpm | Rotating platform concentricity | ±0.01mm |
| Repeated positioning accuracy | ±15arcsec | Precision life | 20000hrs |
| Positional accuracy | ±30arcsec | Protection level | IP40 |

TN85-10K



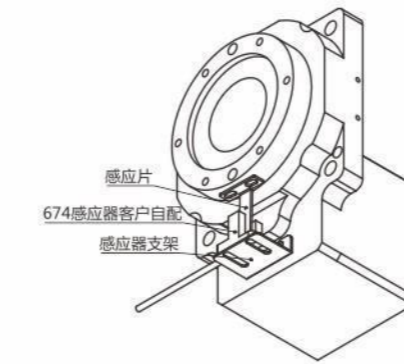
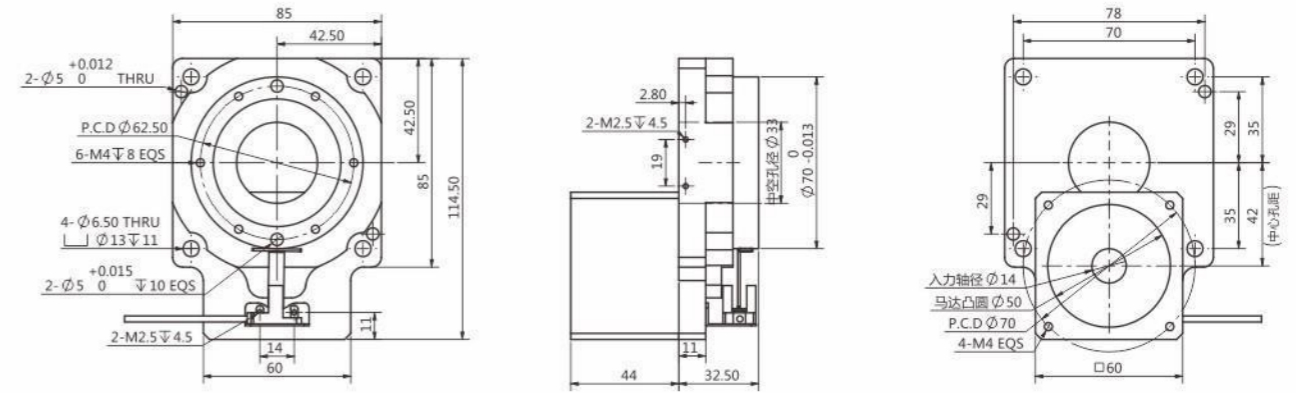
| | | | |
|-------------------------------|------------------------|---------------------------------|------------------------------------|
| Rotating platform bearing | crossed roller bearing | Motor model | 57 stepper motor 60 frame servo |
| Reduction ratio | 1:10 | Allowable axial load | 400N |
| Allowable input torque | ≤35Nm | Rotating platform flatness | ±0.01mm |
| Allowable platform speed | 100rpm | Rotating platform concentricity | ±0.01mm |
| Repeated positioning accuracy | ±15arcsec | Precision life | 20000hrs |
| Positional accuracy | ±30arcsec | Protection level | IP40 |

TN85-18K



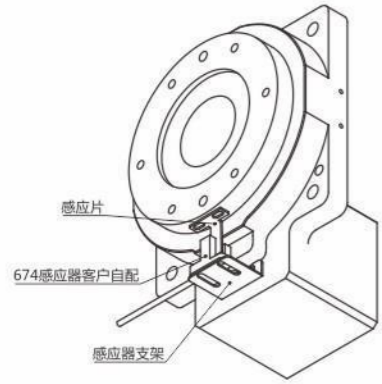
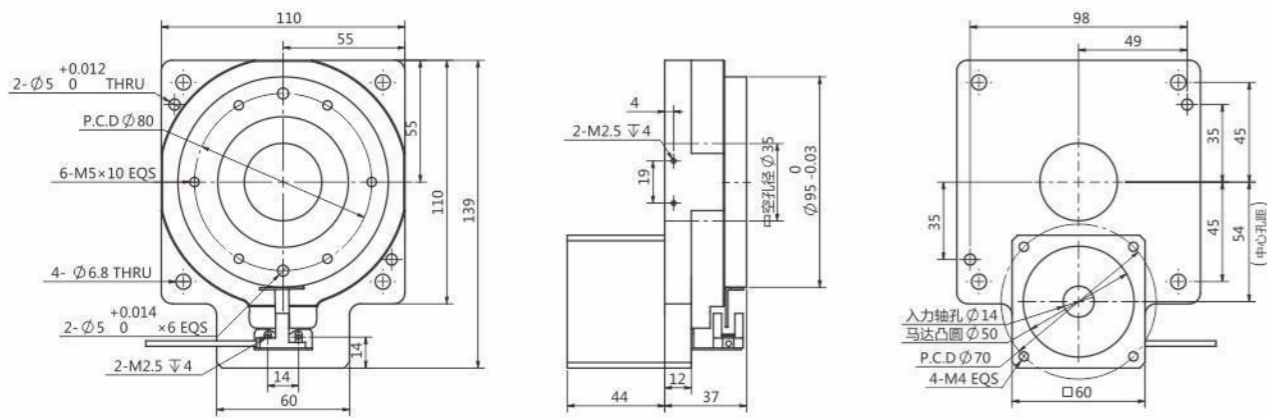
| | | | |
|-------------------------------|------------------------|---------------------------------|--------------------------------|
| Rotating platform bearing | crossed roller bearing | Motor model | 57 stepper motor 100W servo |
| Reduction ratio | 1:18 | Allowable axial load | 400N |
| Allowable input torque | ≤20Nm | Rotating platform flatness | ±0.01mm |
| Allowable platform speed | 100rpm | Rotating platform concentricity | ±0.01mm |
| Repeated positioning accuracy | ±15arcsec | Precision life | 20000hrs |
| Positional accuracy | ±30arcsec | Protection level | IP40 |

TN85-18K



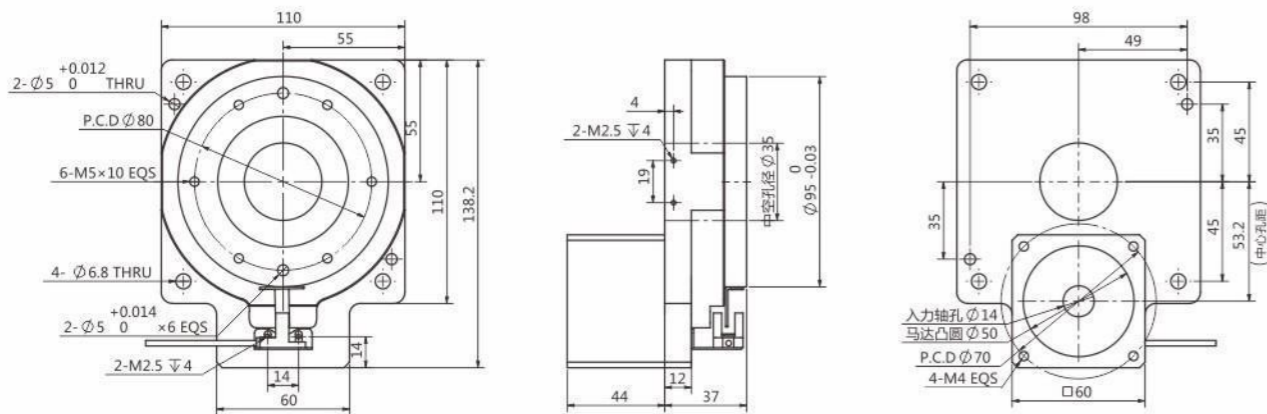
| | | | |
|-------------------------------|------------------------|---------------------------------|------------------------------------|
| Rotating platform bearing | crossed roller bearing | Motor model | 57 stepper motor 60 frame servo |
| Reduction ratio | 1:18 | Allowable axial load | 400N |
| Allowable input torque | ≤35Nm | Rotating platform flatness | ±0.01mm |
| Allowable platform speed | 100rpm | Rotating platform concentricity | ±0.01mm |
| Repeated positioning accuracy | ±15arcsec | Precision life | 20000hrs |
| Positional accuracy | ±30arcsec | Protection level | IP40 |

TN110-5K



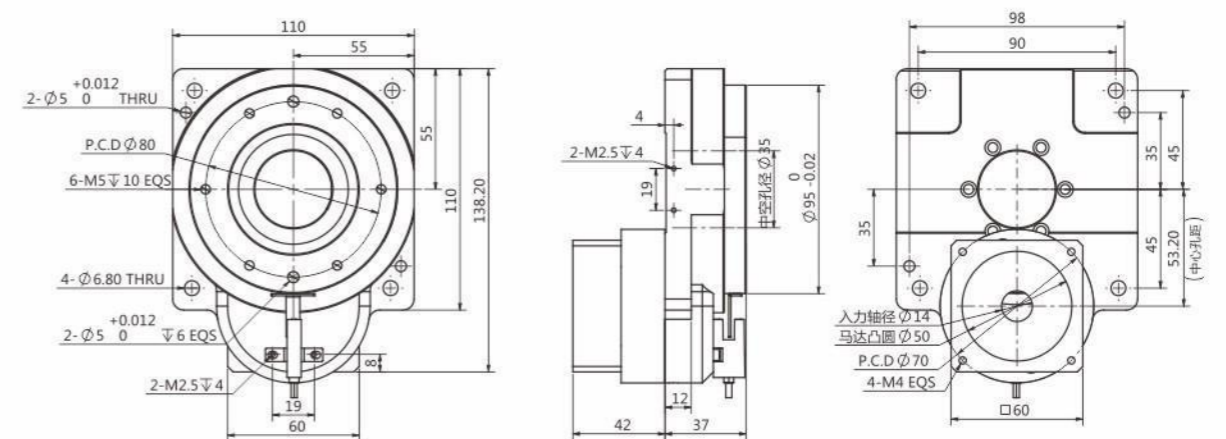
| | | | |
|-------------------------------|------------------------|---------------------------------|------------------------------------|
| Rotating platform bearing | crossed roller bearing | Motor model | 57 stepper motor 60 frame servo |
| Reduction ratio | 1:5 | Allowable axial load | 800N |
| Allowable input torque | ≤47Nm | Rotating platform flatness | ±0.01mm |
| Allowable platform speed | 100rpm | Rotating platform concentricity | ±0.01mm |
| Repeated positioning accuracy | ±15arcsec | Precision life | 20000hrs |
| Positional accuracy | ±30arcsec | Protection level | IP40 |

TN110-10K



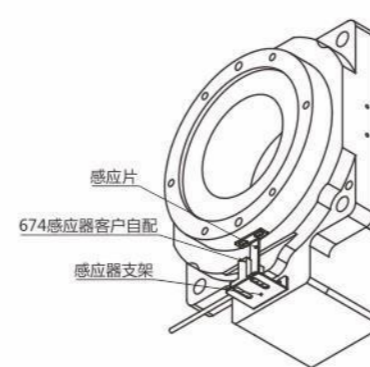
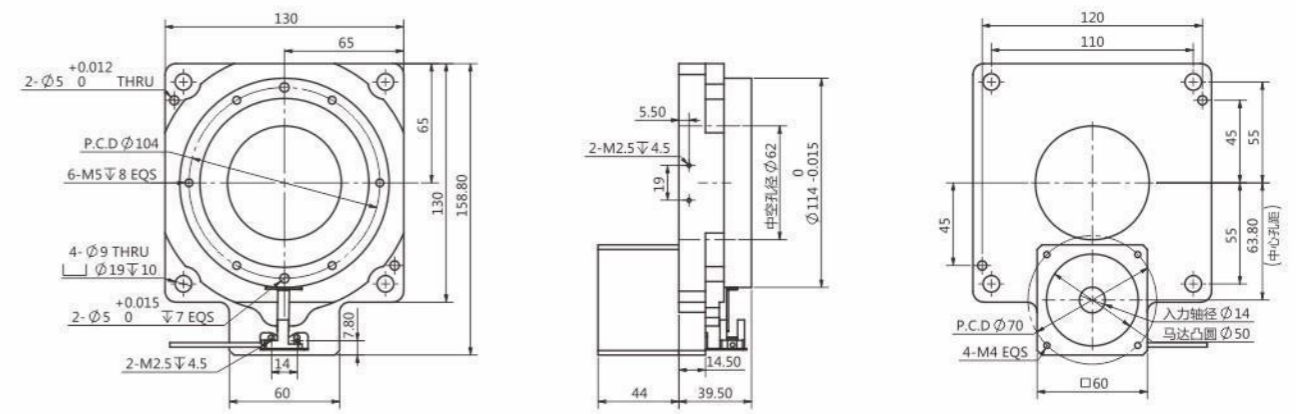
| | | | |
|-------------------------------|------------------------|---------------------------------|------------------------------------|
| Rotating platform bearing | crossed roller bearing | Motor model | 57 stepper motor 60 frame servo |
| Reduction ratio | 1:10 | Allowable axial load | 800N |
| Allowable input torque | ≤35Nm | Rotating platform flatness | ±0.01mm |
| Allowable platform speed | 100rpm | Rotating platform concentricity | ±0.01mm |
| Repeated positioning accuracy | ±15arcsec | Precision life | 20000hrs |
| Positional accuracy | ±30arcsec | Protection level | IP40 |

TN110-10K



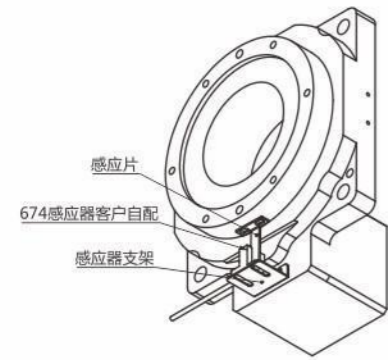
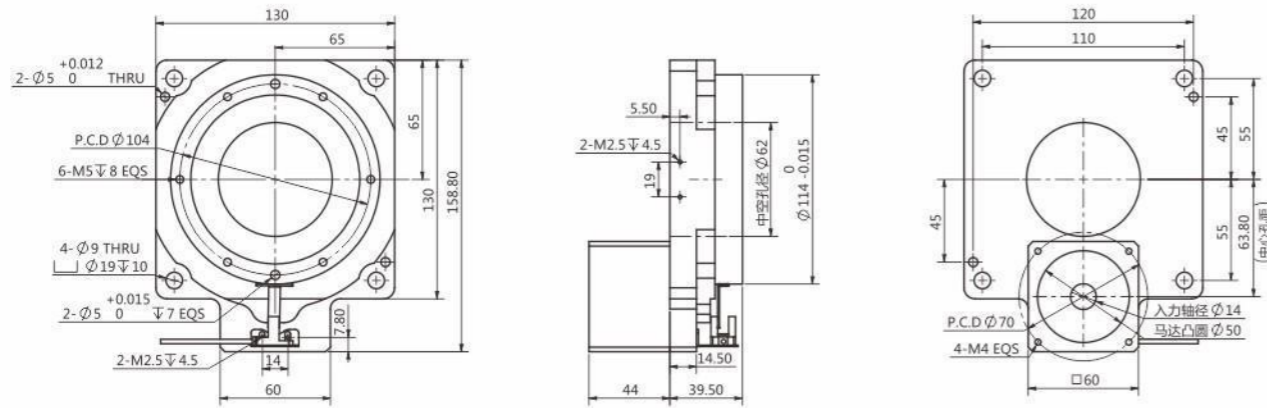
| | | | |
|-------------------------------|------------------------|---------------------------------|------------------------------------|
| Rotating platform bearing | crossed roller bearing | Motor model | 57 stepper motor 60 frame servo |
| Reduction ratio | 1:10 | Allowable axial load | 900N |
| Allowable input torque | ≤35Nm | Rotating platform flatness | ±0.01mm |
| Allowable platform speed | 100rpm | Rotating platform concentricity | ±0.01mm |
| Repeated positioning accuracy | ±15arcsec | Precision life | 20000hrs |
| Positional accuracy | ±30arcsec | Protection level | IP40 |

TN130-10K



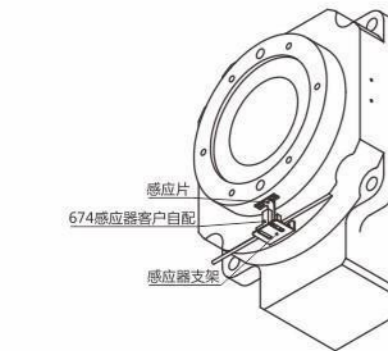
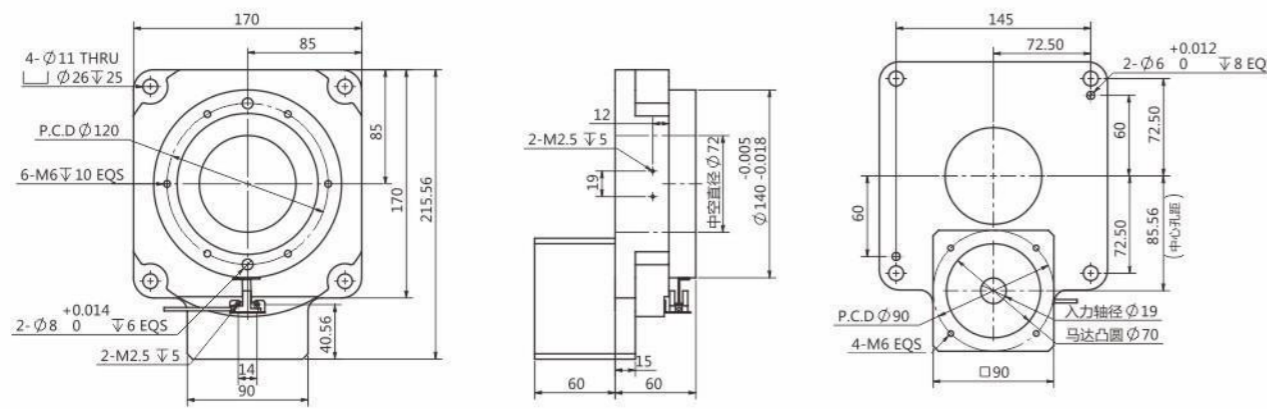
| | | | |
|-------------------------------|------------------------|---------------------------------|------------------------------------|
| Rotating platform bearing | crossed roller bearing | Motor model | 57 stepper motor 60 frame servo |
| Reduction ratio | 1:10 | Allowable axial load | 1000N |
| Allowable input torque | ≤55Nm | Rotating platform flatness | ±0.01mm |
| Allowable platform speed | 100rpm | Rotating platform concentricity | ±0.01mm |
| Repeated positioning accuracy | ±15arcsec | Precision life | 20000hrs |
| Positional accuracy | ±30arcsec | Protection level | IP40 |

TN130-18K



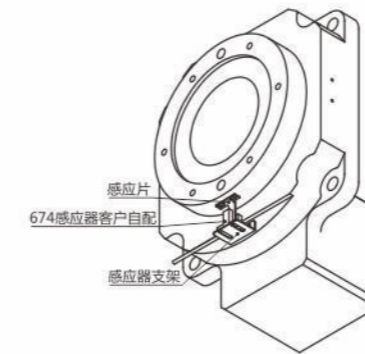
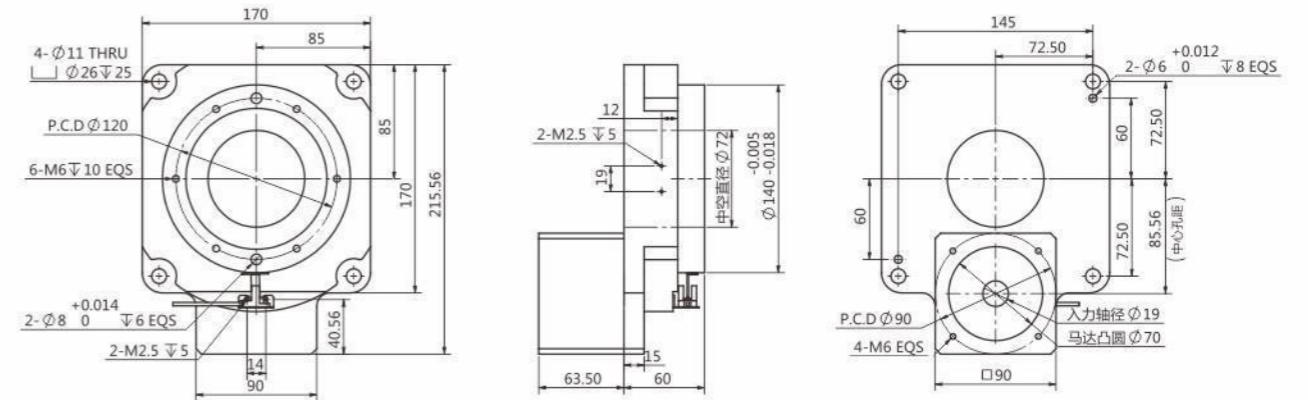
| | | | |
|-------------------------------|------------------------|---------------------------------|------------------------------------|
| Rotating platform bearing | crossed roller bearing | Motor model | 57 stepper motor 60 frame servo |
| Reduction ratio | 1:18 | Allowable axial load | 1000N |
| Allowable input torque | $\leq 55\text{Nm}$ | Rotating platform flatness | $\pm 0.01\text{mm}$ |
| Allowable platform speed | 100rpm | Rotating platform concentricity | $\pm 0.01\text{mm}$ |
| Repeated positioning accuracy | $\pm 15\text{arcsec}$ | Precision life | 20000hrs |
| Positional accuracy | $\pm 30\text{arcsec}$ | Protection level | IP40 |

TN170-10K



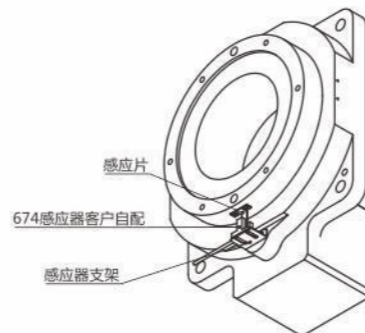
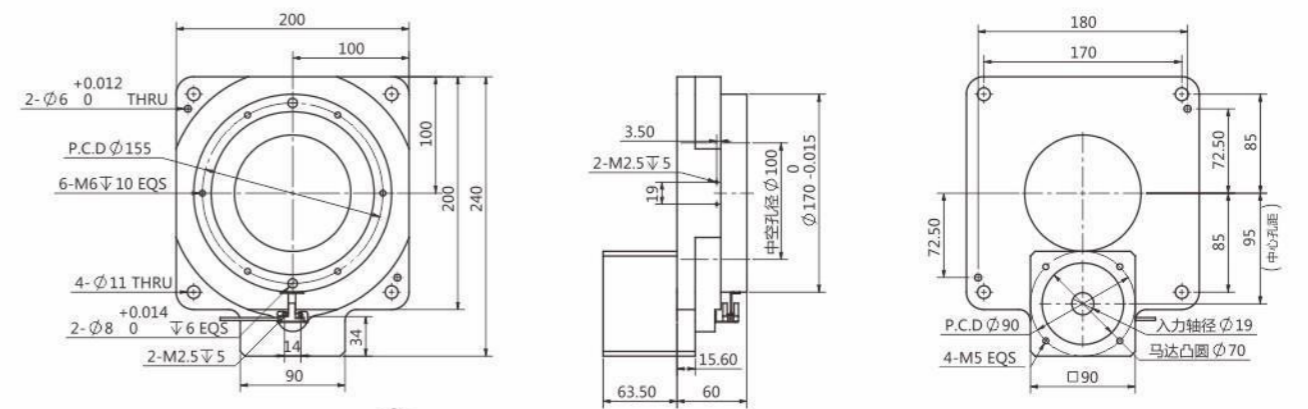
| | | | |
|-------------------------------|------------------------|---------------------------------|------------------------------------|
| Rotating platform bearing | crossed roller bearing | Motor model | 80 stepper motor 80 frame servo |
| Reduction ratio | 1:10 | Allowable axial load | 1500N |
| Allowable input torque | $\leq 72\text{Nm}$ | Rotating platform flatness | $\pm 0.01\text{mm}$ |
| Allowable platform speed | 100rpm | Rotating platform concentricity | $\pm 0.01\text{mm}$ |
| Repeated positioning accuracy | $\pm 15\text{arcsec}$ | Precision life | 20000hrs |
| Positional accuracy | $\pm 30\text{arcsec}$ | Protection level | IP40 |

TN170-18K



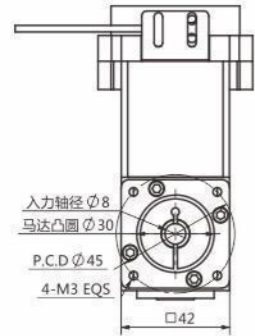
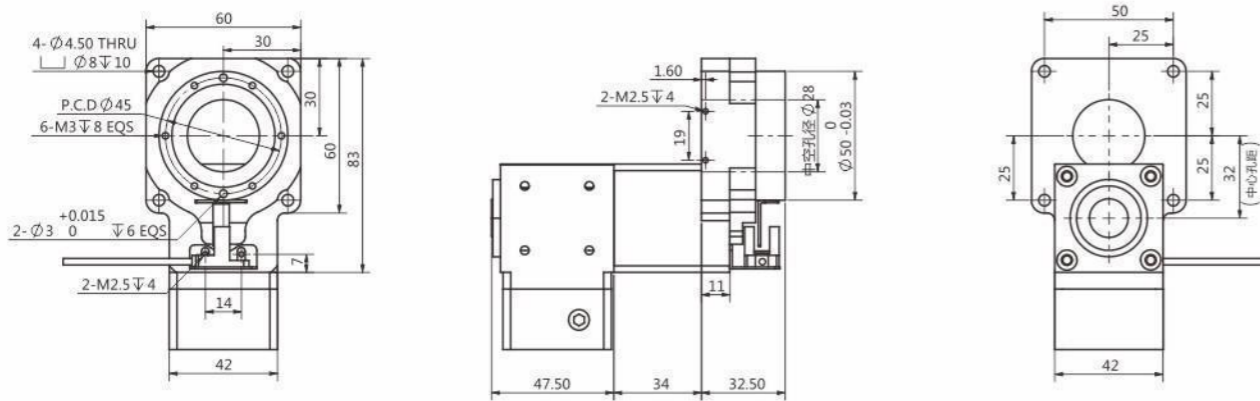
| | | | |
|-------------------------------|------------------------|---------------------------------|------------------------------------|
| Rotating platform bearing | crossed roller bearing | Motor model | 86 stepper motor 80 frame servo |
| Reduction ratio | 1:18 | Allowable axial load | 1500N |
| Allowable input torque | $\leq 50\text{Nm}$ | Rotating platform flatness | $\pm 0.01\text{mm}$ |
| Allowable platform speed | 100rpm | Rotating platform concentricity | $\pm 0.01\text{mm}$ |
| Repeated positioning accuracy | $\pm 15\text{arcsec}$ | Precision life | 20000hrs |
| Positional accuracy | $\pm 30\text{arcsec}$ | Protection level | IP40 |

TN200-10K



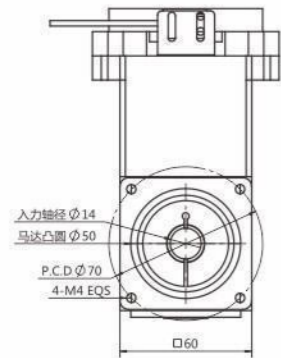
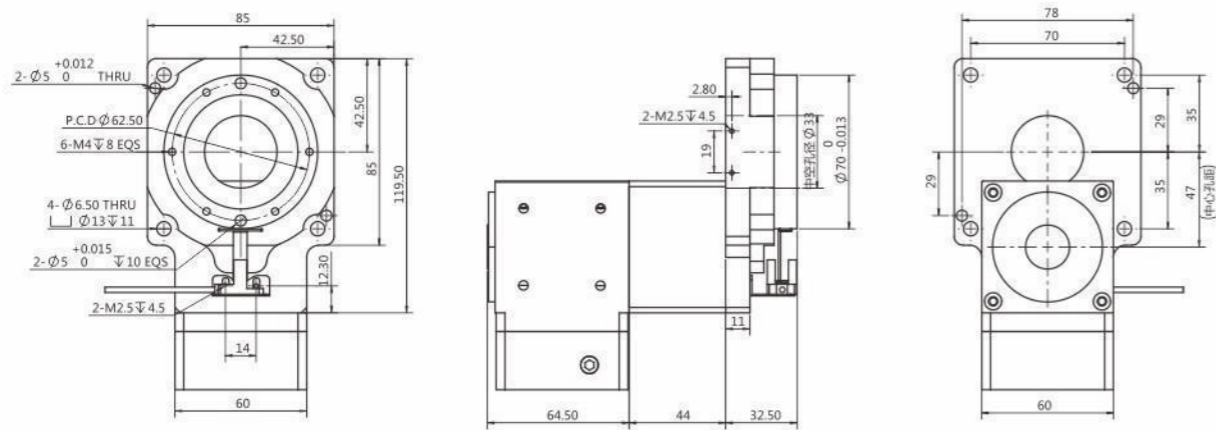
| | | | |
|-------------------------------|------------------------|---------------------------------|------------------------------------|
| Rotating platform bearing | crossed roller bearing | Motor model | 86 stepper motor 80 frame servo |
| Reduction ratio | 1:10 | Allowable axial load | 2000N |
| Allowable input torque | $\leq 90\text{Nm}$ | Rotating platform flatness | $\pm 0.01\text{mm}$ |
| Allowable platform speed | 100rpm | Rotating platform concentricity | $\pm 0.01\text{mm}$ |
| Repeated positioning accuracy | $\pm 15\text{arcsec}$ | Precision life | 20000hrs |
| Positional accuracy | $\pm 30\text{arcsec}$ | Protection level | IP40 |

TSR60-5K



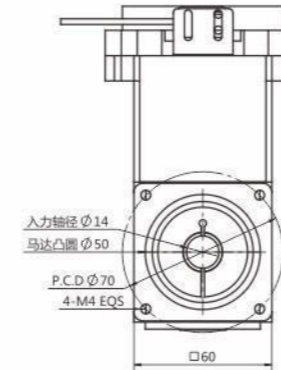
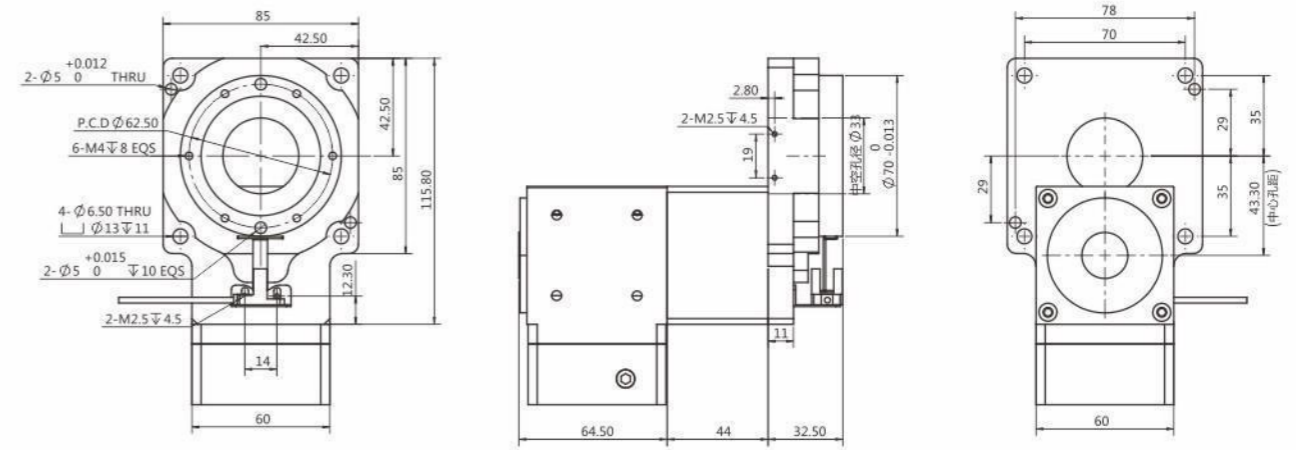
| | | | |
|-------------------------------|------------------------|---------------------------------|---------------------|
| Rotating platform bearing | crossed roller bearing | Motor model | 42 stepper motor |
| Reduction ratio | 5/10/15/25 | Allowable axial load | 100W servo |
| Allowable input torque | $\leq 5\text{Nm}$ | Rotating platform flatness | 200N |
| Allowable platform speed | 100rpm | Rotating platform concentricity | $\pm 0.01\text{mm}$ |
| Repeated positioning accuracy | $\pm 15\text{arcsec}$ | Precision life | $\pm 0.01\text{mm}$ |
| Positional accuracy | $\pm 30\text{arcsec}$ | Protection level | 20000hrs |
| | | | IP40 |

TSR85-5K



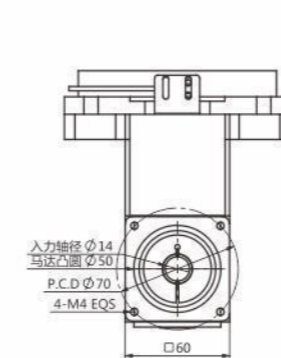
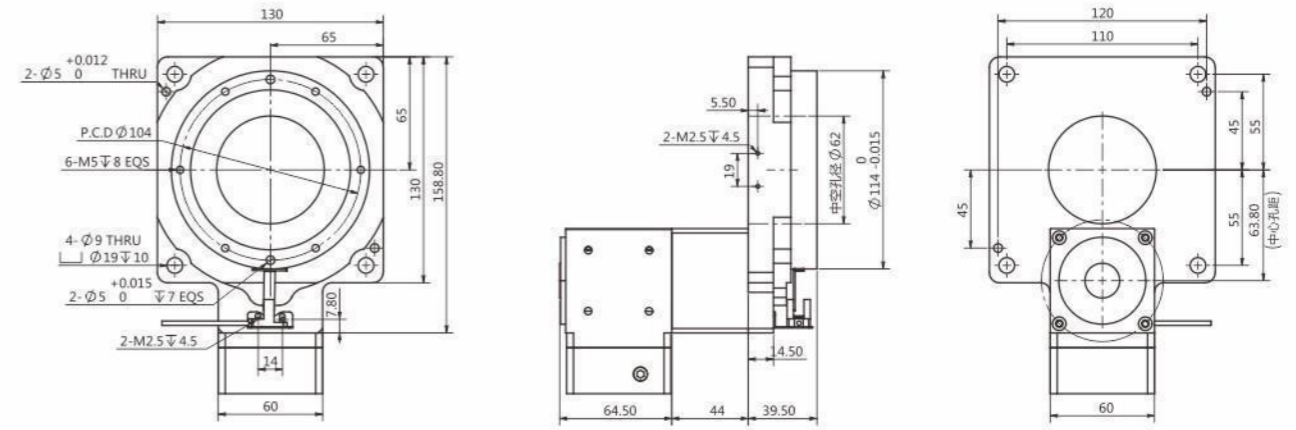
| | | | |
|-------------------------------|------------------------|---------------------------------|---------------------|
| Rotating platform bearing | crossed roller bearing | Motor model | 57 stepper motor |
| Reduction ratio | 5/10/15/25 | Allowable axial load | 60frame servo |
| Allowable input torque | $\leq 35\text{Nm}$ | Rotating platform flatness | 400N |
| Allowable platform speed | 100rpm | Rotating platform concentricity | $\pm 0.01\text{mm}$ |
| Repeated positioning accuracy | $\pm 15\text{arcsec}$ | Precision life | $\pm 0.01\text{mm}$ |
| Positional accuracy | $\pm 30\text{arcsec}$ | Protection level | 20000hrs |
| | | | IP40 |

TSR85-10K



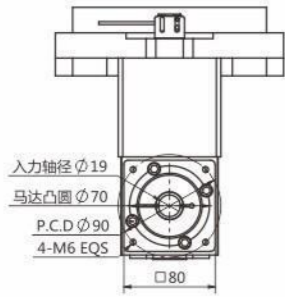
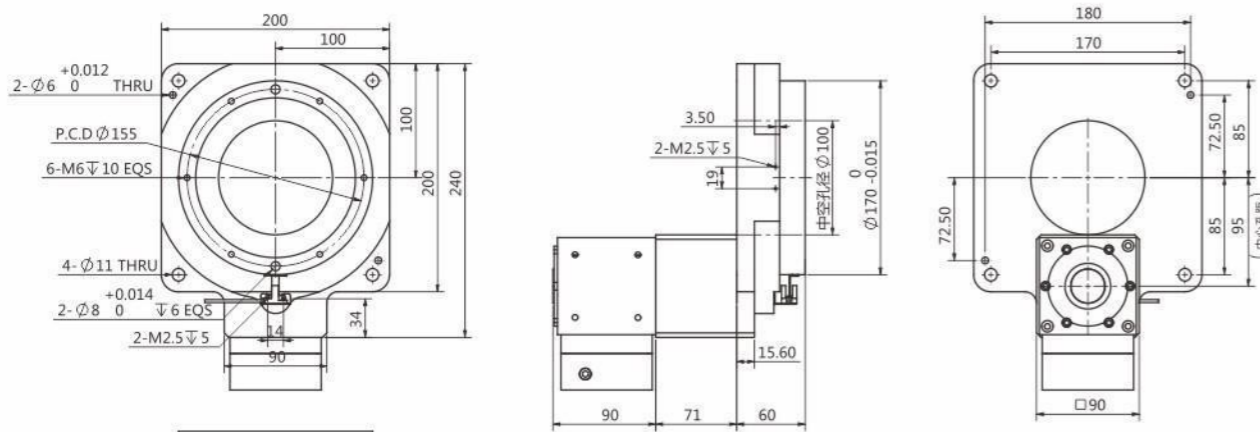
| | | | |
|-------------------------------|------------------------|---------------------------------|---------------------|
| Rotating platform bearing | crossed roller bearing | Motor model | 57 stepper motor |
| Reduction ratio | 10/20/30/50 | Allowable axial load | 60frame servo |
| Allowable input torque | $\leq 35\text{Nm}$ | Rotating platform flatness | 400N |
| Allowable platform speed | 100rpm | Rotating platform concentricity | $\pm 0.01\text{mm}$ |
| Repeated positioning accuracy | $\pm 15\text{arcsec}$ | Precision life | $\pm 0.01\text{mm}$ |
| Positional accuracy | $\pm 30\text{arcsec}$ | Protection level | 20000hrs |
| | | | IP40 |

TSR130-10K



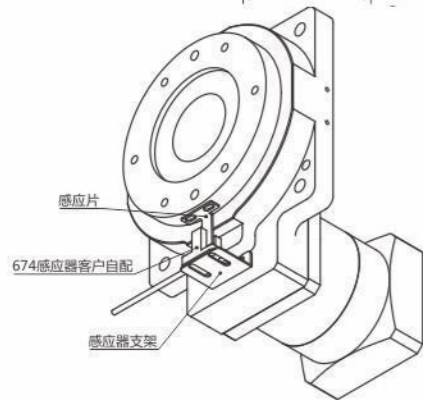
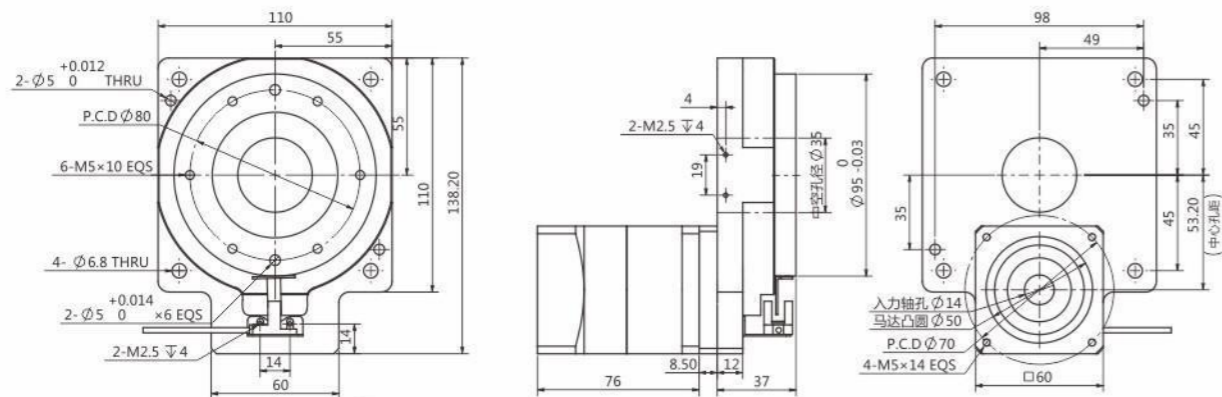
| | | | |
|-------------------------------|------------------------|---------------------------------|---------------------|
| Rotating platform bearing | crossed roller bearing | Motor model | 57 stepper motor |
| Reduction ratio | 10/20/30/50 | Allowable axial load | 60frame servo |
| Allowable input torque | $\leq 55\text{Nm}$ | Rotating platform flatness | 1000N |
| Allowable platform speed | 100rpm | Rotating platform concentricity | $\pm 0.01\text{mm}$ |
| Repeated positioning accuracy | $\pm 15\text{arcsec}$ | Precision life | $\pm 0.01\text{mm}$ |
| Positional accuracy | $\pm 30\text{arcsec}$ | Protection level | 20000hrs |
| | | | IP40 |

TSR200-10K



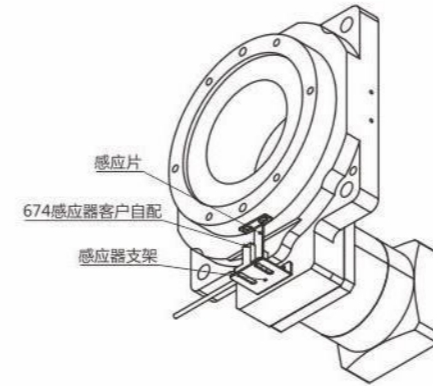
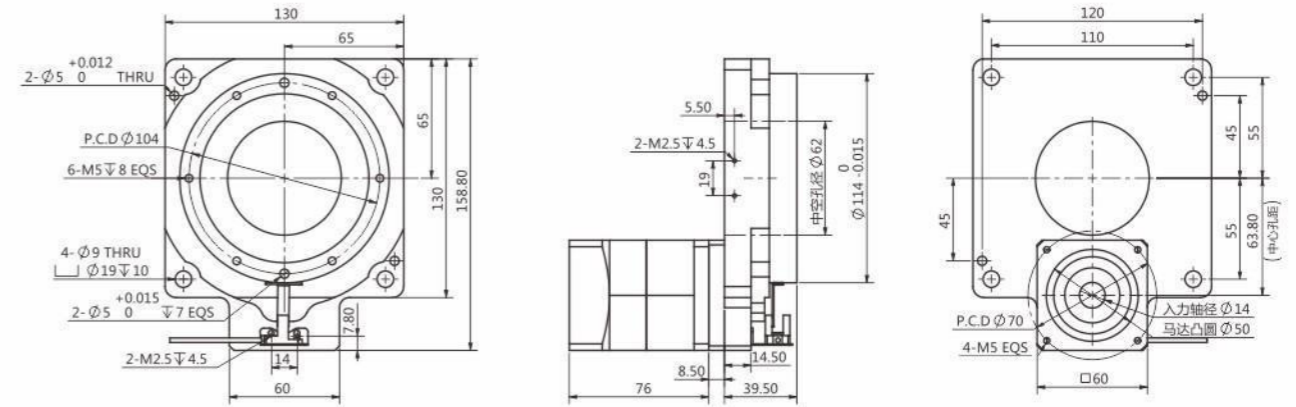
| | | | |
|-------------------------------|------------------------|---------------------------------|------------------------------------|
| Rotating platform bearing | crossed roller bearing | Motor model | 86 stepper motor 80 frame servo |
| Reduction ratio | 10/20/30/50 | Allowable axial load | 2000N |
| Allowable input torque | $\leq 60\text{Nm}$ | Rotating platform flatness | $\pm 0.01\text{mm}$ |
| Allowable platform speed | 100rpm | Rotating platform concentricity | $\pm 0.01\text{mm}$ |
| Repeated positioning accuracy | $\pm 15\text{arcsec}$ | Precision life | 20000hrs |
| Positional accuracy | $\pm 30\text{arcsec}$ | Protection level | IP40 |

TP110-10K



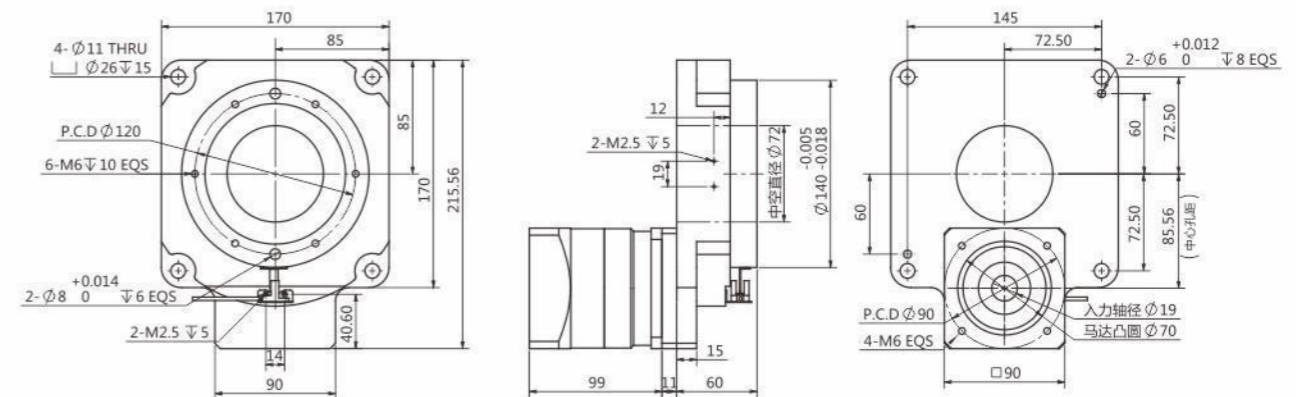
| | | | |
|-------------------------------|------------------------|---------------------------------|------------------------------------|
| Rotating platform bearing | crossed roller bearing | Motor model | 57 stepper motor 60 frame servo |
| Reduction ratio | 30/50/70/100 | Allowable axial load | 800N |
| Allowable input torque | $\leq 47\text{Nm}$ | Rotating platform flatness | $\pm 0.01\text{mm}$ |
| Allowable platform speed | 100rpm | Rotating platform concentricity | $\pm 0.01\text{mm}$ |
| Repeated positioning accuracy | $\pm 15\text{arcsec}$ | Precision life | 20000hrs |
| Positional accuracy | $\pm 30\text{arcsec}$ | Protection level | IP40 |

TP130-10K



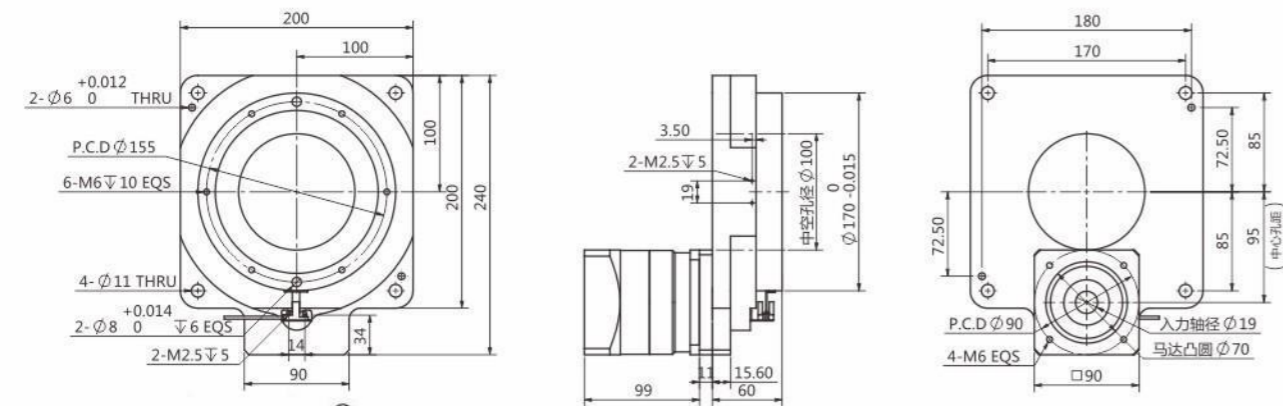
| | | | |
|-------------------------------|------------------------|---------------------------------|------------------------------------|
| Rotating platform bearing | crossed roller bearing | Motor model | 57 stepper motor 60 frame servo |
| Reduction ratio | 30/50/70/100 | Allowable axial load | 1000N |
| Allowable input torque | $\leq 55\text{Nm}$ | Rotating platform flatness | $\pm 0.01\text{mm}$ |
| Allowable platform speed | 100rpm | Rotating platform concentricity | $\pm 0.01\text{mm}$ |
| Repeated positioning accuracy | $\pm 15\text{arcsec}$ | Precision life | 20000hrs |
| Positional accuracy | $\pm 30\text{arcsec}$ | Protection level | IP40 |

TP170-10K



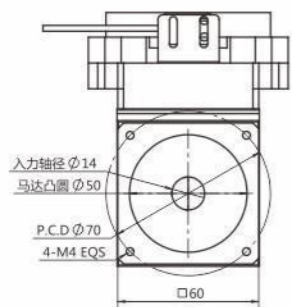
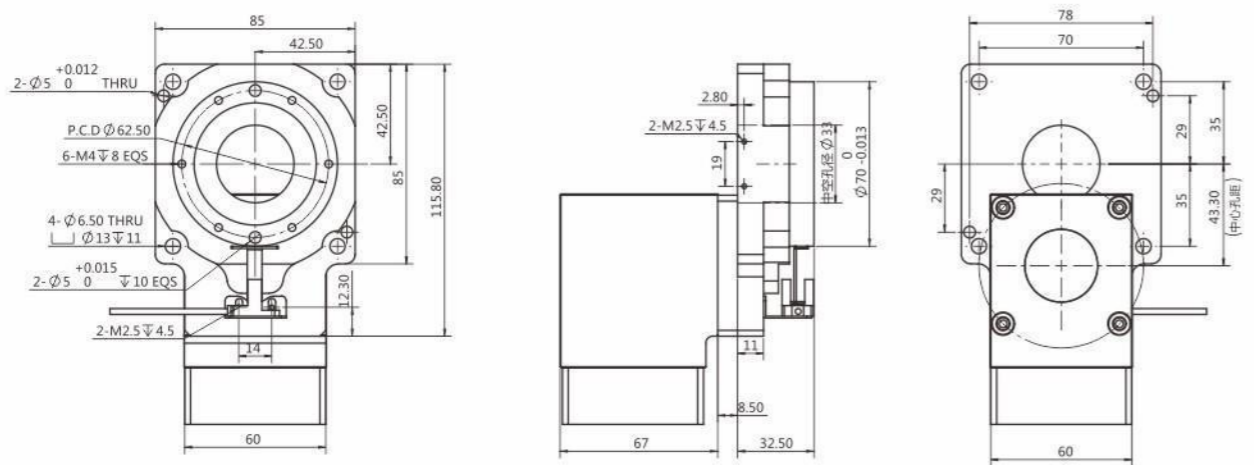
| | | | |
|-------------------------------|------------------------|---------------------------------|------------------------------------|
| Rotating platform bearing | crossed roller bearing | Motor model | 86 stepper motor 80 frame servo |
| Reduction ratio | 30/50/70/100 | Allowable axial load | 1500N |
| Allowable input torque | $\leq 72\text{Nm}$ | Rotating platform flatness | $\pm 0.01\text{mm}$ |
| Allowable platform speed | 100rpm | Rotating platform concentricity | $\pm 0.01\text{mm}$ |
| Repeated positioning accuracy | $\pm 15\text{arcsec}$ | Precision life | 20000hrs |
| Positional accuracy | $\pm 30\text{arcsec}$ | Protection level | IP40 |

TP200-10K



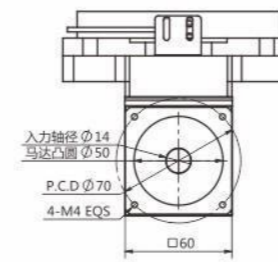
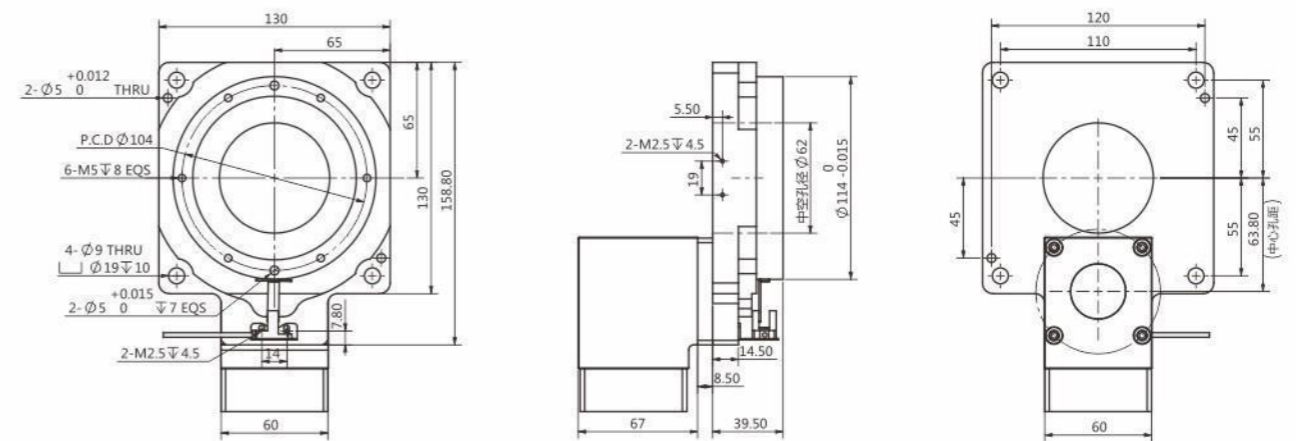
| | | | |
|-------------------------------|------------------------|---------------------------------|------------------------------------|
| Rotating platform bearing | crossed roller bearing | Motor model | 86 stepper motor 80 frame servo |
| Reduction ratio | 30/50/70/100 | Allowable axial load | 2000N |
| Allowable input torque | ≤ 90 Nm | Rotating platform flatness | ± 0.01 mm |
| Allowable platform speed | 100rpm | Rotating platform concentricity | ± 0.01 mm |
| Repeated positioning accuracy | ± 15 arcsec | Precision life | 20000hrs |
| Positional accuracy | ± 30 arcsec | Protection level | IP40 |

TR85-10K



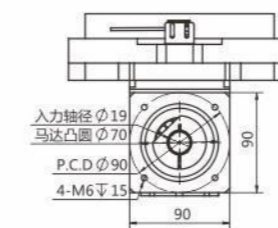
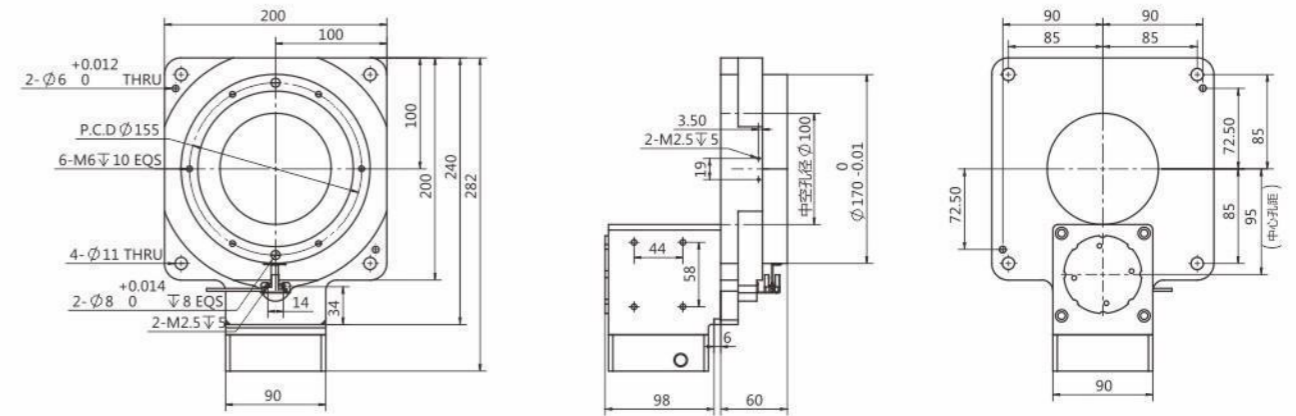
| | | | |
|-------------------------------|------------------------|---------------------------------|------------------------------------|
| Rotating platform bearing | crossed roller bearing | Motor model | 57 stepper motor 60 frame servo |
| Reduction ratio | 20/30/50 | Allowable axial load | 400N |
| Allowable input torque | ≤ 35 Nm | Rotating platform flatness | ± 0.01 mm |
| Allowable platform speed | 100rpm | Rotating platform concentricity | ± 0.01 mm |
| Repeated positioning accuracy | ± 15 arcsec | Precision life | 20000hrs |
| Positional accuracy | ± 30 arcsec | Protection level | IP40 |

TR130-10K



| | | | |
|-------------------------------|------------------------|---------------------------------|------------------------------------|
| Rotating platform bearing | crossed roller bearing | Motor model | 57 stepper motor 60 frame servo |
| Reduction ratio | 20/30/50 | Allowable axial load | 1000N |
| Allowable input torque | ≤ 55 Nm | Rotating platform flatness | ± 0.01 mm |
| Allowable platform speed | 100rpm | Rotating platform concentricity | ± 0.01 mm |
| Repeated positioning accuracy | ± 15 arcsec | Precision life | 20000hrs |
| Positional accuracy | ± 30 arcsec | Protection level | IP40 |

TR200-10K

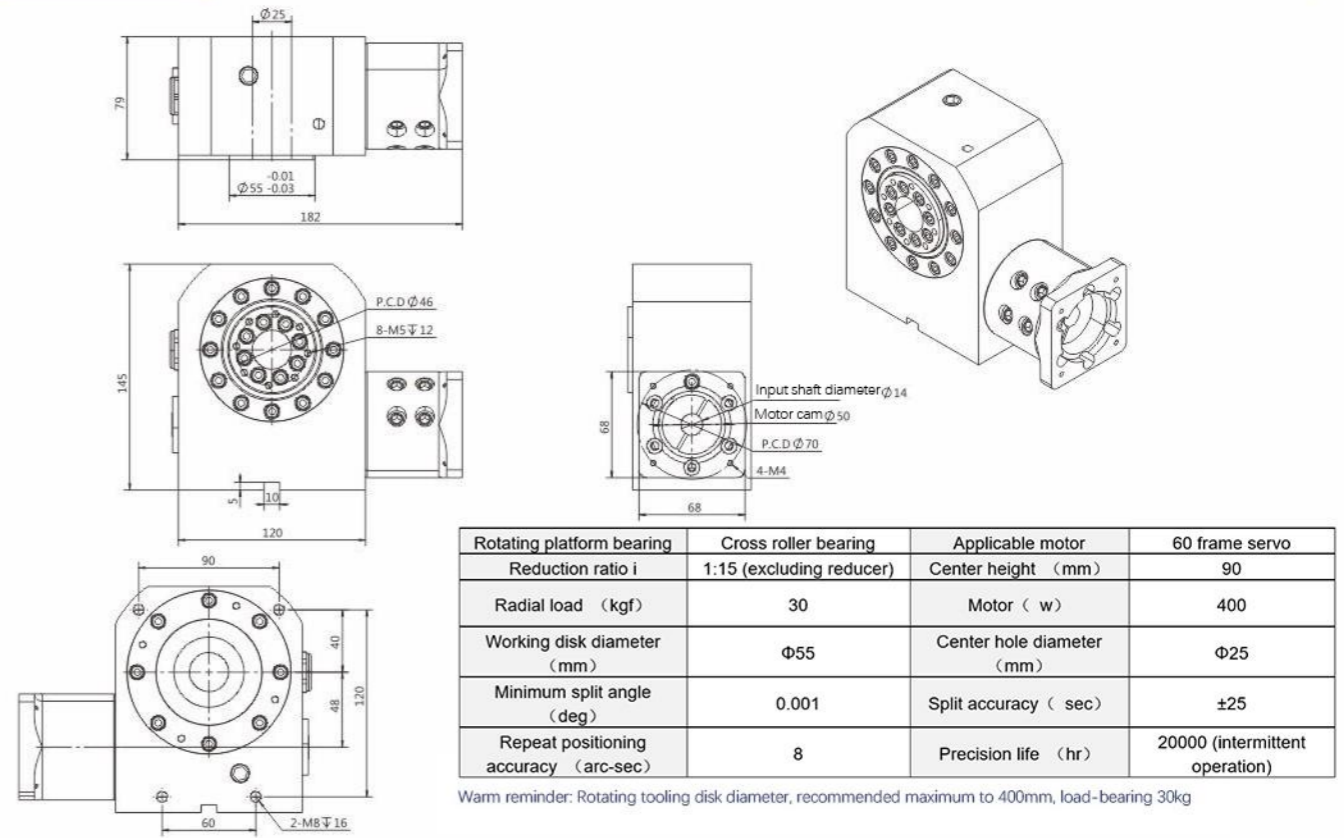


| | | | |
|-------------------------------|------------------------|---------------------------------|------------------------------------|
| Rotating platform bearing | crossed roller bearing | Motor model | 86 stepper motor 80 frame servo |
| Reduction ratio | 20/30/50 | Allowable axial load | 2000N |
| Allowable input torque | ≤ 60 Nm | Rotating platform flatness | ± 0.01 mm |
| Allowable platform speed | 100rpm | Rotating platform concentricity | ± 0.01 mm |
| Repeated positioning accuracy | ± 15 arcsec | Precision life | 20000hrs |
| Positional accuracy | ± 30 arcsec | Protection level | IP40 |

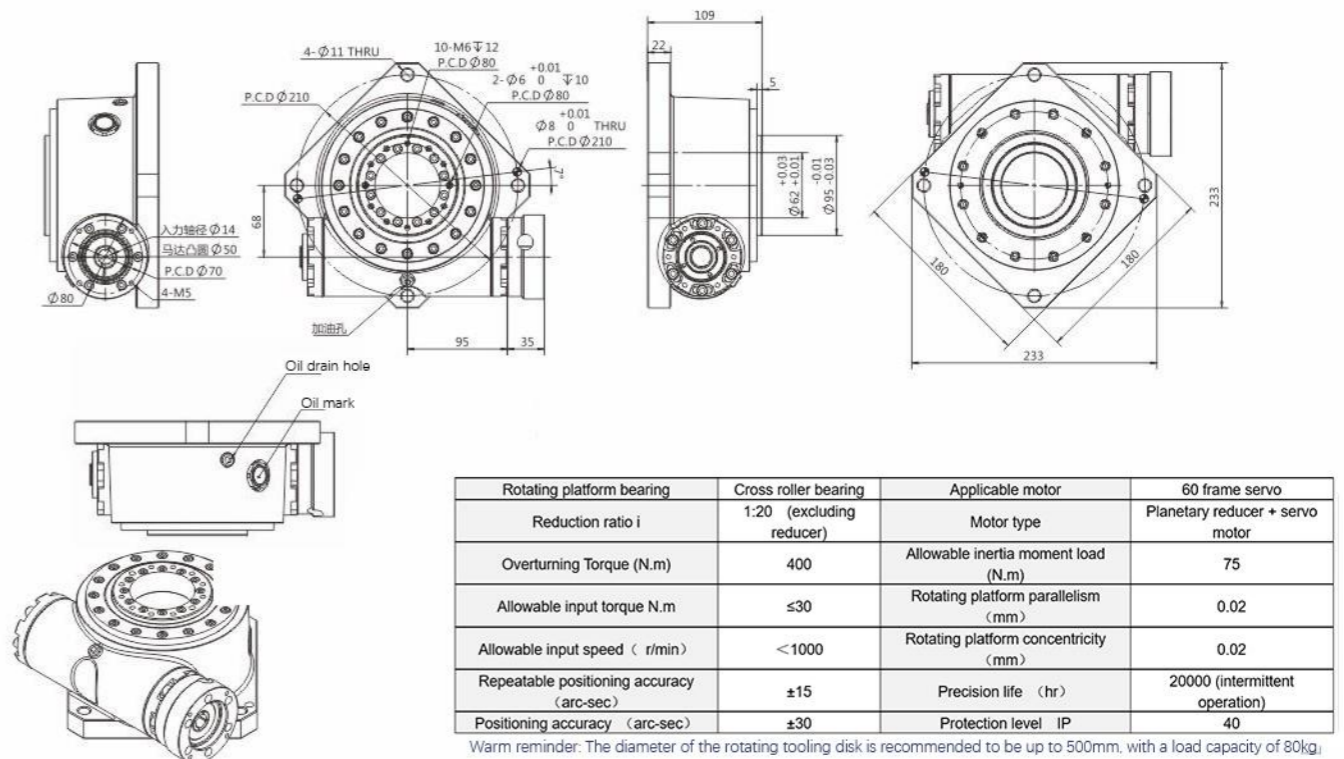
TY Series



TY48HP-15K

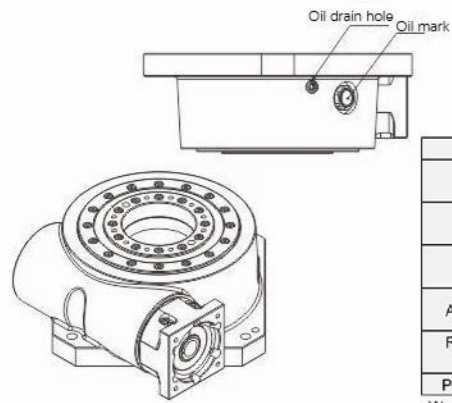
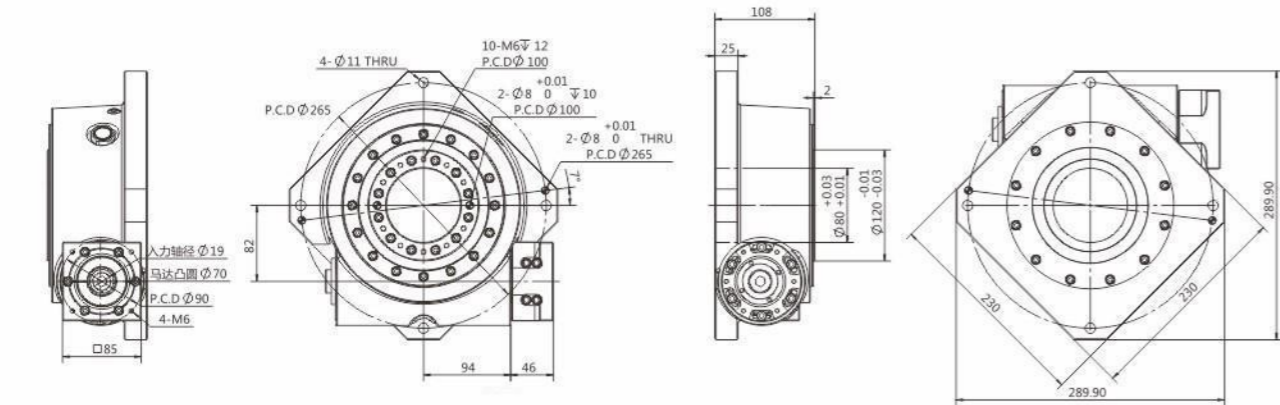


TY68HP-20K



温馨提示：如需倒装、侧装，请订货时提前注明

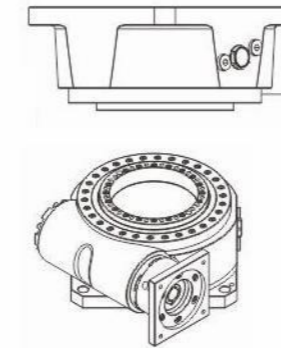
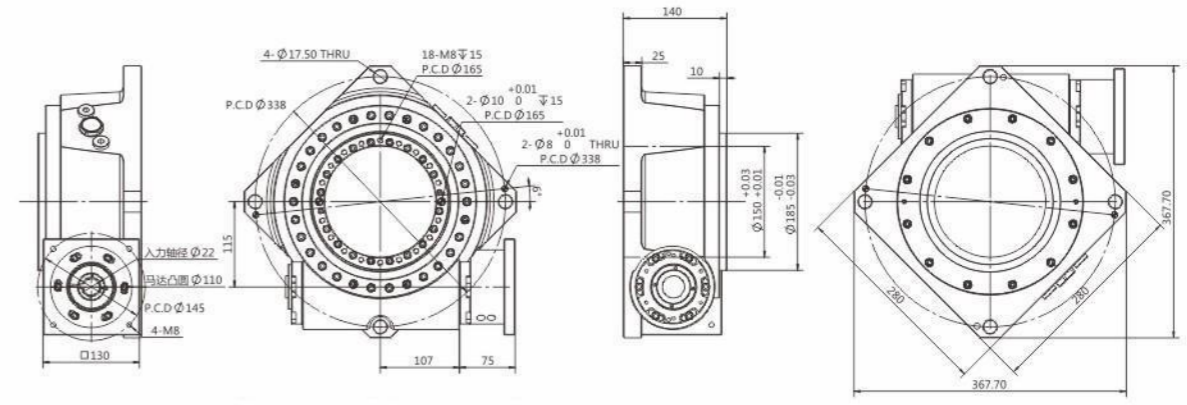
TY82HP-24K



| Rotating platform bearing | Cross roller bearing | Applicable motor | 80 frame servo |
|---|--------------------------|--------------------------------------|---------------------------------|
| Reduction ratio i | 1:24 (excluding reducer) | Motor type | Planetary reducer + servo motor |
| Overturning Torque (N.m) | 584 | Allowable inertia moment load (N.m) | 200 |
| Allowable input torque N.m | ≤68 | Rotating platform parallelism (mm) | 0.02 |
| Allowable input speed (r/min) | <1000 | Rotating platform concentricity (mm) | 0.02 |
| Repeatable positioning accuracy (arc-sec) | ±15 | Precision life (hr) | 20000 (intermittent operation) |
| Positioning accuracy (arc-sec) | ±30 | Protection level IP | 40 |

Warm reminder: The diameter of the rotating tooling disk is recommended to be up to 600mm, with a load capacity of 200 kg

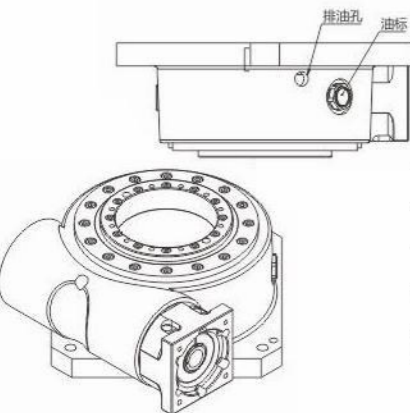
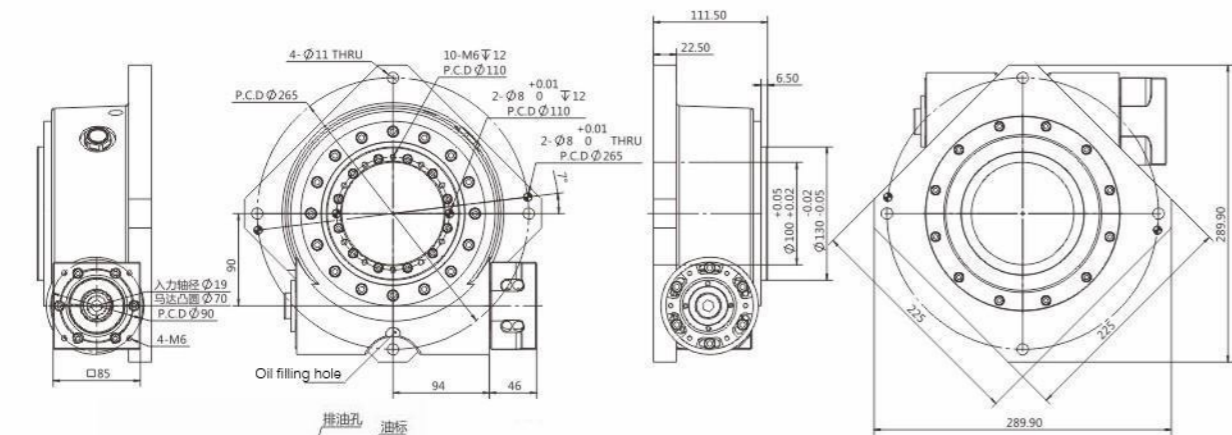
TY115HP-20K



| Rotating platform bearing | Cross roller bearing | Applicable motor | 130 frame servo |
|---|--------------------------|--------------------------------------|---------------------------------|
| Reduction ratio i | 1:20 (excluding reducer) | Motor type | Planetary reducer + servo motor |
| Overturning Torque (N.m) | 1028 | Allowable inertia moment load (N.m) | 250 |
| Allowable input torque N.m | ≤90 | Rotating platform parallelism (mm) | 0.02 |
| Allowable input speed (r/min) | <1000 | Rotating platform concentricity (mm) | 0.02 |
| Repeatable positioning accuracy (arc-sec) | ±15 | Precision life (hr) | 20000 (intermittent operation) |
| Positioning accuracy (arc-sec) | ±30 | Protection level IP | 40 |

Warm reminder: The diameter of the rotating tooling disk is recommended to be up to 800mm, with a load capacity of 500 kg

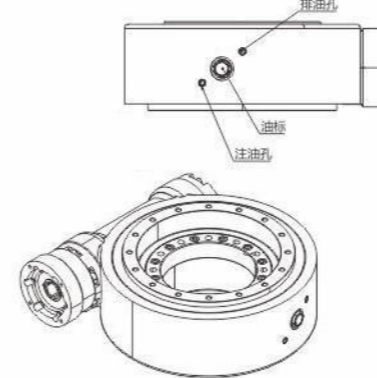
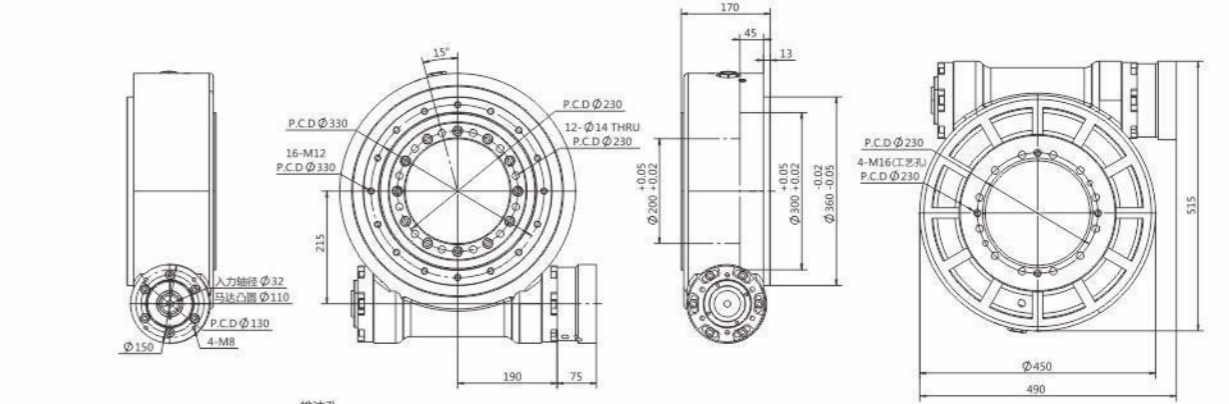
TY90HP-20K



| Rotating platform bearing | Cross roller bearing | Applicable motor | 80 frame servo |
|---|--------------------------|--------------------------------------|---------------------------------|
| Reduction ratio i | 1:20 (excluding reducer) | Motor type | Planetary reducer + servo motor |
| Overturning Torque (N.m) | 625 | Allowable inertia moment load (N.m) | 220 |
| Allowable input torque N.m | ≤72 | Rotating platform parallelism (mm) | 0.02 |
| Allowable input speed (r/min) | <1000 | Rotating platform concentricity (mm) | 0.02 |
| Repeatable positioning accuracy (arc-sec) | ±15 | Precision life (hr) | 20000 (intermittent operation) |
| Positioning accuracy (arc-sec) | ±30 | Protection level IP | 40 |

Warm reminder: The diameter of the rotating tooling disk is recommended to be up to 600mm, with a load capacity of 260 kg

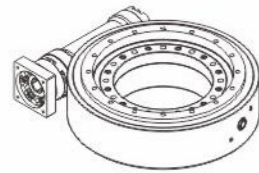
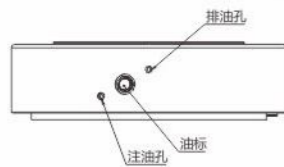
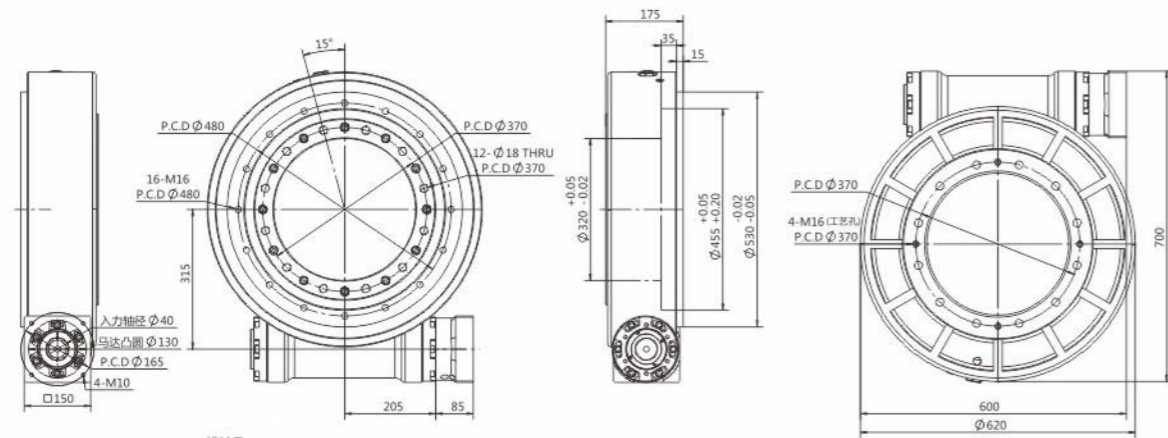
TY215HP-40K



| Rotating platform bearing | Cross roller bearing | Applicable motor | 130 frame servo |
|---|--------------------------|--------------------------------------|---------------------------------|
| Reduction ratio i | 1:40 (excluding reducer) | Motor type | Planetary reducer + servo motor |
| Overturning Torque (N.m) | 3749 | Allowable vertical pressure (N.m) | 18000 |
| Radial load T | 1.9 | Rotating platform parallelism (mm) | 0.02 |
| Allowable input speed (r/min) | <800 | Rotating platform concentricity (mm) | 0.02 |
| Repeatable positioning accuracy (arc-sec) | ±15 | Precision life (hr) | 20000 (intermittent operation) |
| Positioning accuracy (arc-sec) | ±30 | Protection level IP | 40 |

Warm reminder: The diameter of the rotating tooling disk is recommended to be up to 1300mm, with a load capacity of 1500 kg

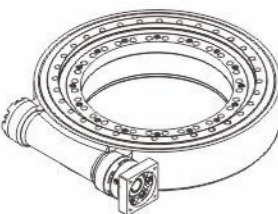
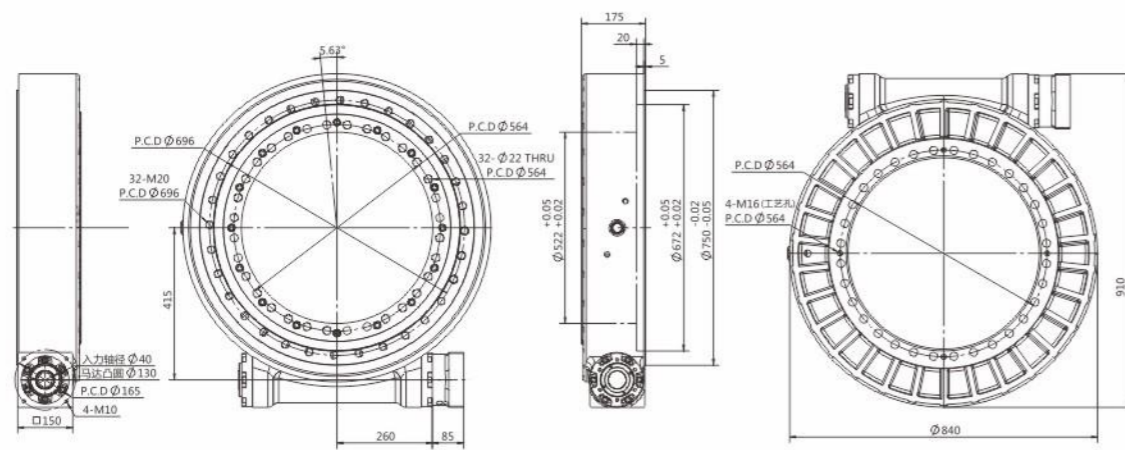
TY315HP-60K



| Rotating platform bearing | Cross roller bearing | Applicable motor | 180 frame servo |
|---|--------------------------|--------------------------------------|---------------------------------|
| Reduction ratio i | 1:60 (excluding reducer) | Motor type | Planetary reducer + servo motor |
| Overturning Torque (N.m) | 13354 | Allowable vertical pressure (N.m) | 28000 |
| Radial load T | 2.5 | Rotating platform parallelism (mm) | 0.03 |
| Allowable input speed (r/min) | <800 | Rotating platform concentricity (mm) | 0.03 |
| Repeatable positioning accuracy (arc-sec) | ±15 | Precision life (hr) | 20000 (intermittent operation) |
| Positioning accuracy (arc-sec) | ±30 | Protection level IP | 40 |

Warm reminder: The diameter of the rotating tooling disk is recommended to be up to 1400mm, with a load capacity of 2500 kg

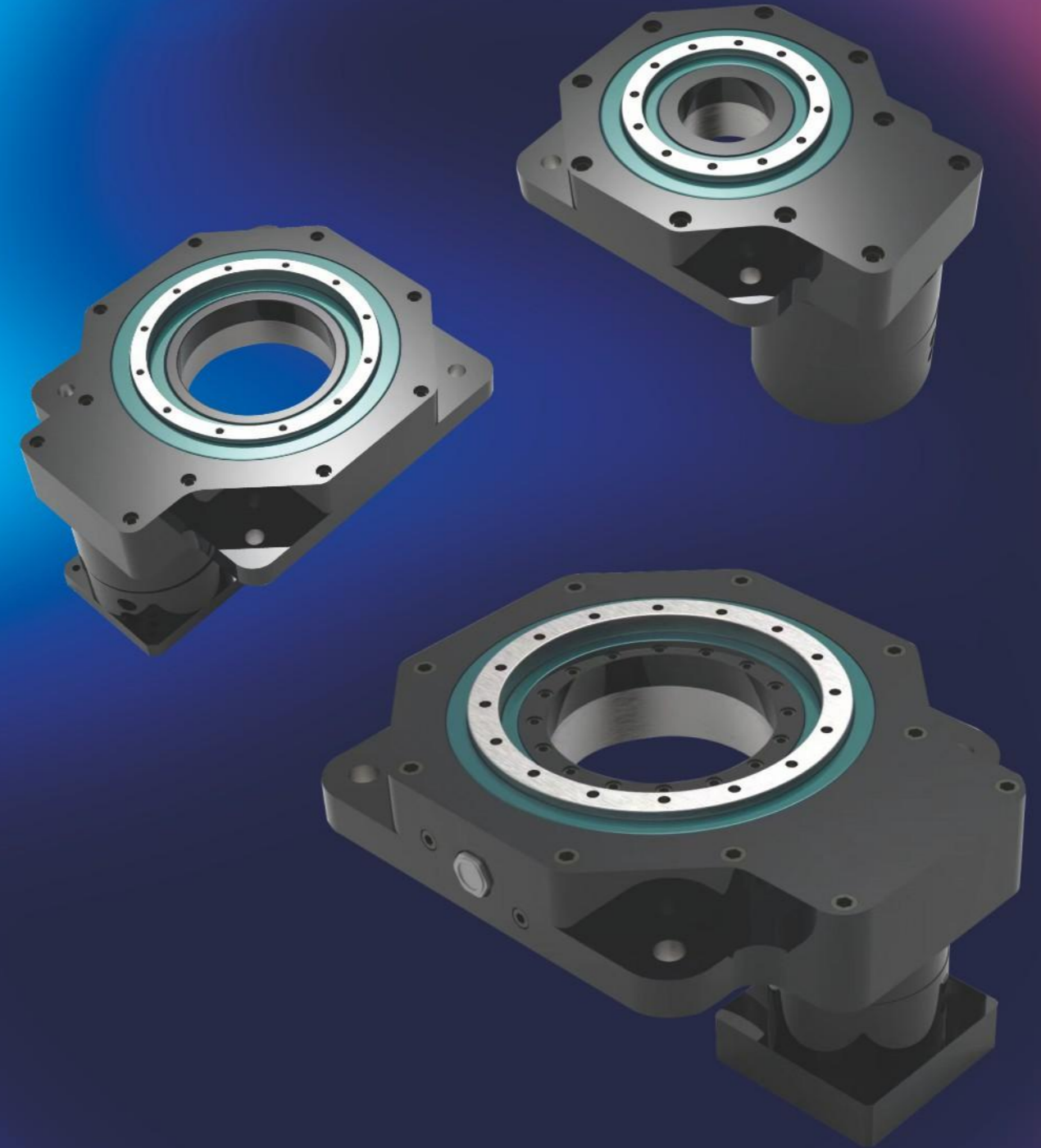
TY415HP-60K



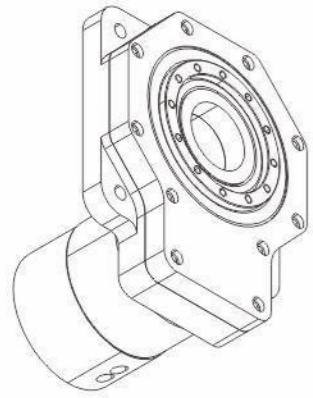
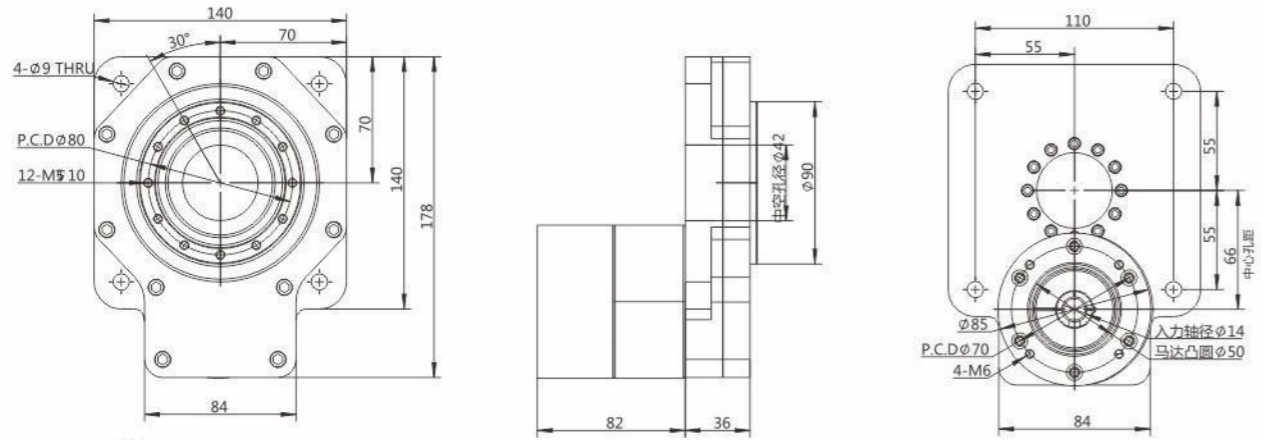
| Rotating platform bearing | Cross roller bearing | Applicable motor | 180 frame servo |
|---|--------------------------|--------------------------------------|---------------------------------|
| Reduction ratio i | 1:60 (excluding reducer) | Motor type | Planetary reducer + servo motor |
| Overturning Torque (N.m) | 30000 | Allowable vertical pressure (N.m) | 60000 |
| Radial load T | 4.5 | Rotating platform parallelism (mm) | 0.03 |
| Allowable input speed (r/min) | <800 | Rotating platform concentricity (mm) | 0.03 |
| Repeatable positioning accuracy (arc-sec) | ±15 | Precision life (hr) | 20000 (intermittent operation) |
| Positioning accuracy (arc-sec) | ±30 | Protection level IP | 40 |

Warm reminder: The diameter of the rotating tooling disk is recommended to be up to 1900mm, with a load capacity of 4500 kg

TU Series

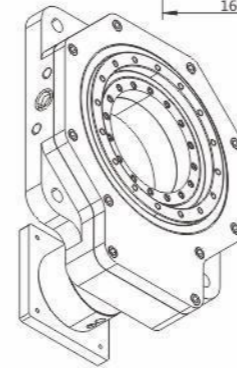
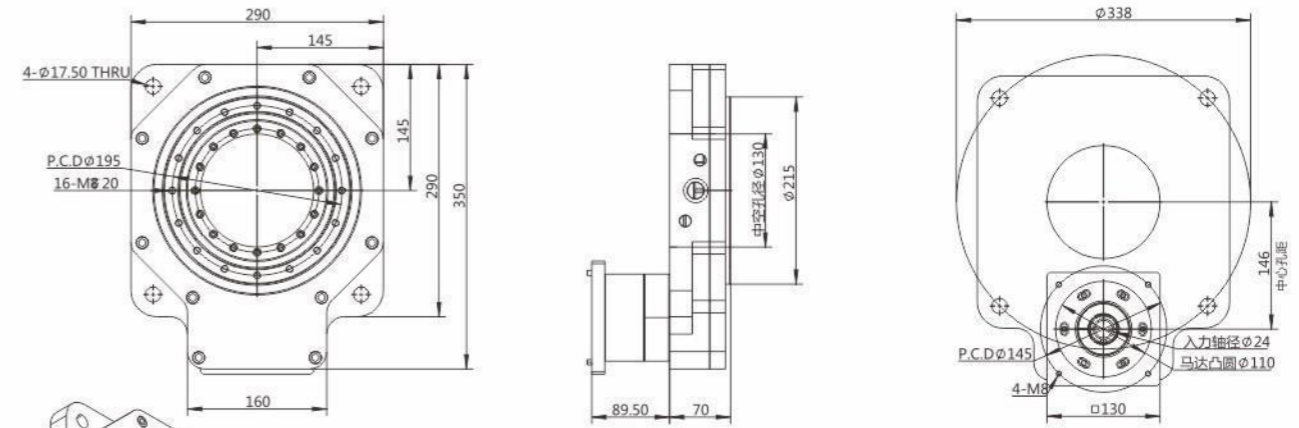


TU66



| Rotating platform bearing | Cross roller bearing | Applicable motor | Planet + 60 frame servo |
|---------------------------------|----------------------|---------------------------------|-------------------------|
| Reduction ratio | 1:5 | Allowable axial pressure N | 1000N |
| Allowable input torque | ≤50Nm | Rotating platform flatness | ±0.02mm |
| Allowable disk speed | 150rpm | Rotating platform concentricity | ±0.01mm |
| Repeatable positioning accuracy | ±15arcsec | Precision life | 20000 hr |
| Positioning accuracy | ±30arcsec | Protection level | IP50 |

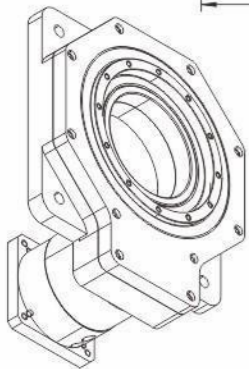
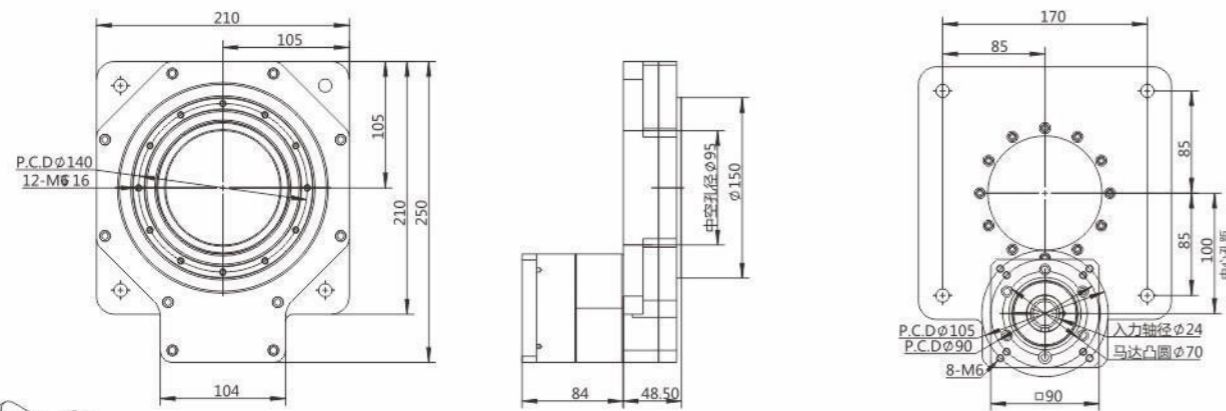
TU146



| Rotating platform bearing | Cross roller bearing | Applicable motor | Planet + 130 frame servo |
|---------------------------------|----------------------|---------------------------------|--------------------------|
| Reduction ratio | 1:5 | Allowable axial pressure N | 4000N |
| Allowable input torque | ≤180Nm | Rotating platform flatness | ±0.02mm |
| Allowable disk speed | 75rpm | Rotating platform concentricity | ±0.01mm |
| Repeatable positioning accuracy | ±15arcsec | Precision life | 20000hr |
| Positioning accuracy | ±30arcsec | Protection level | IP50 |

温馨提示：盘面输出转速高于100rpm/min,请订货前提前说明

TU100

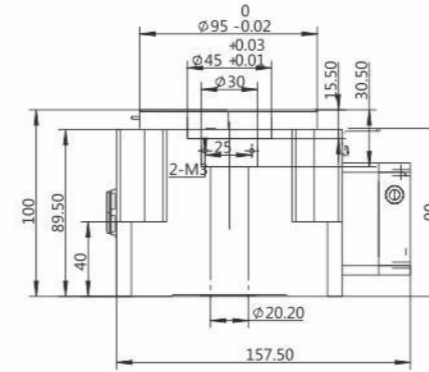
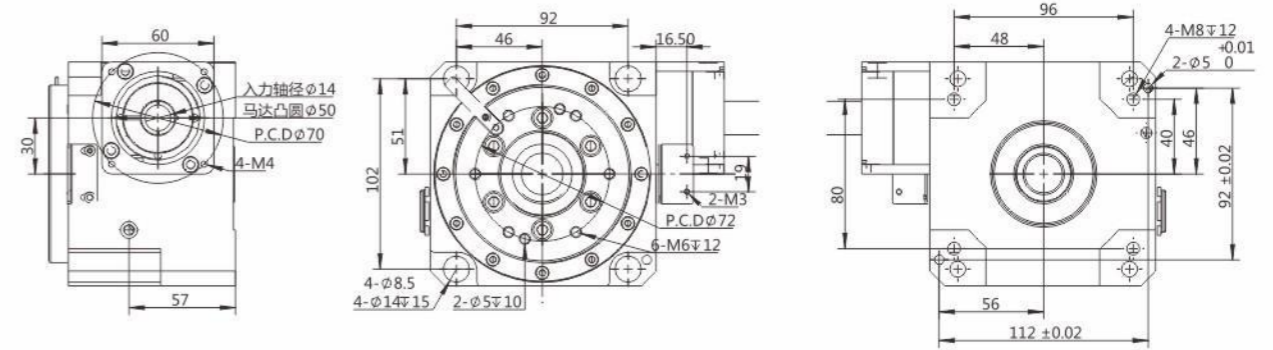


| Rotating platform bearing | Cross roller bearing | Applicable motor | Planet + 80 frame servo |
|---------------------------------|----------------------|---------------------------------|-------------------------|
| Reduction ratio | 1:5 | Allowable axial pressure | 2000N |
| Allowable input torque | ≤120Nm | Rotating platform flatness | ±0.02mm |
| Allowable disk speed | 150rpm | Rotating platform concentricity | ±0.01mm |
| Repeatable positioning accuracy | ±15arcsec | Precision life | 20000 hr |
| Positioning accuracy | ±30arcsec | Protection level | IP50 |

THD Series

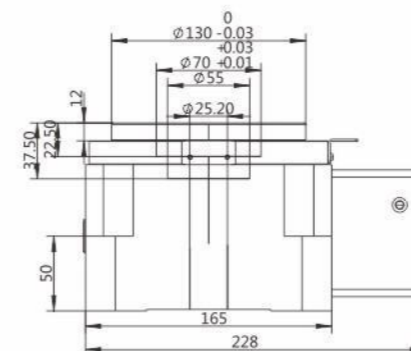
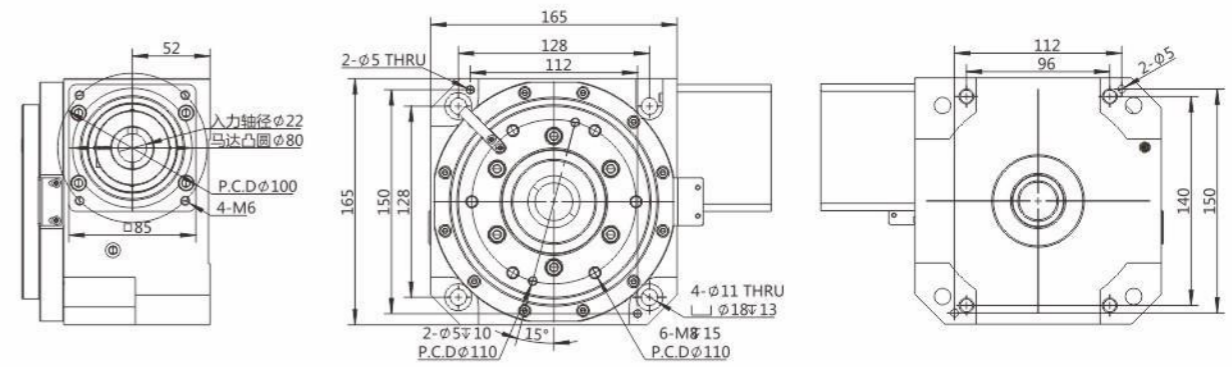


THD100-12K



| Rotating platform bearing | Cross roller bearing | Applicable motor | 57 stepper 60 frame servo |
|---------------------------------|----------------------|---------------------------------|---------------------------|
| Reduction ratio | 1:12 | Allowable axial pressure | 2200N |
| Allowable radial load | 1800N | Rotating platform flatness | ±0.01mm |
| Allowable disk speed | 100rpm | Rotating platform concentricity | ±0.01mm |
| Repeatable positioning accuracy | ±5arcsec | Precision life | 20000hr |
| Positioning accuracy | ±20arcsec | Protection level | IP50 |
| Allowable Rotational torque | 150Nm | | |

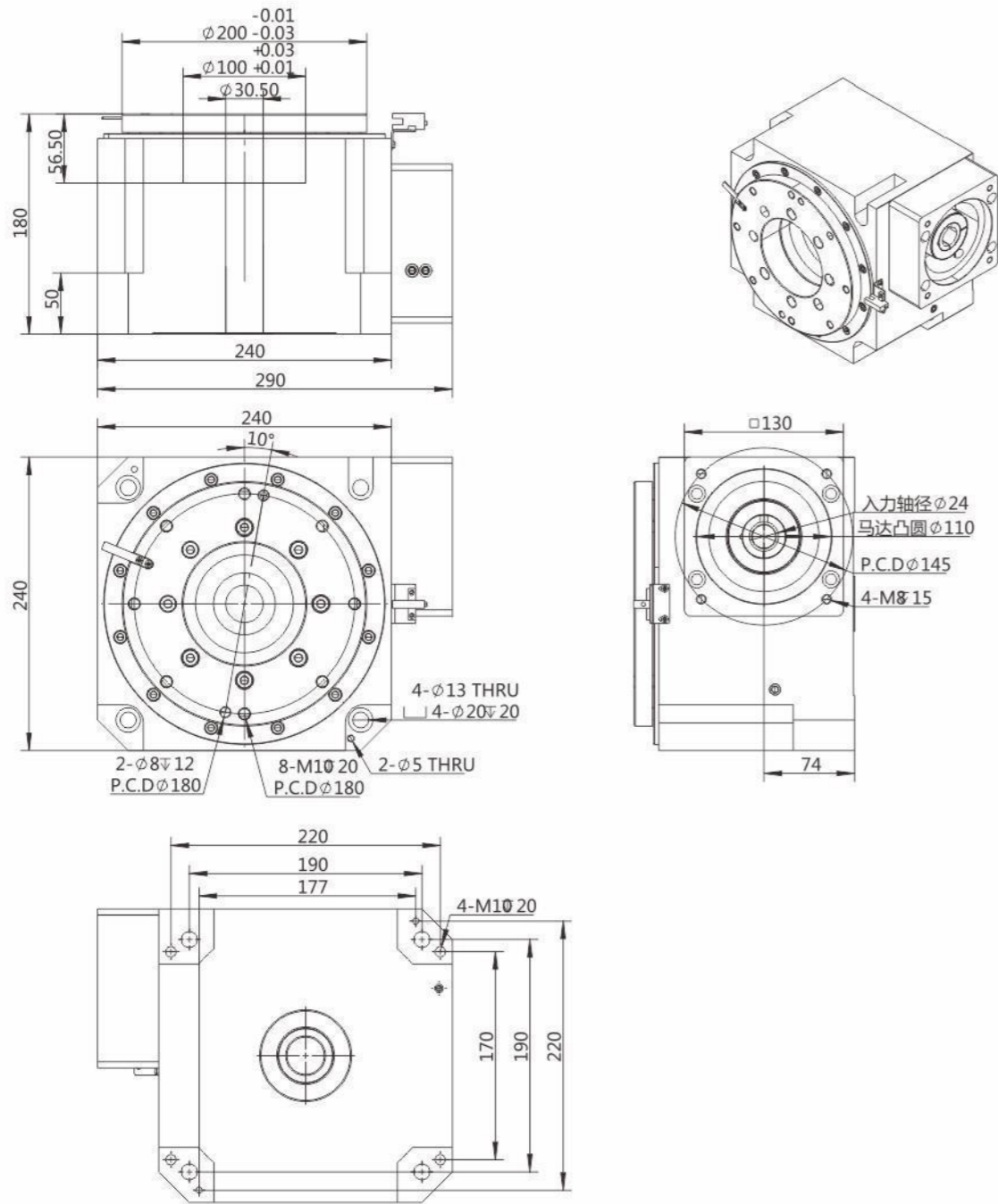
THD150-15K



| Rotating platform bearing | Cross roller bearing | Applicable motor | 86 stepper 80 frame servo |
|---------------------------------|----------------------|------------------------------------|---------------------------|
| Reduction ratio | 1:15 | Allowable axial pressure N | 7300N |
| Allowable radial load | 6000N | Rotating platform flatness mm | ±0.01mm |
| Allowable disk speed | 100rpm | Rotating platform concentricity mm | ±0.01mm |
| Repeatable positioning accuracy | ±5arcsec | Precision life | 20000 hr |
| Positioning accuracy | ±25arcsec | Protection level | IP50 |
| Allowable Rotational torque | 250Nm | | |

温馨提示：盘面输出转速高于100rpm/min.请订货前说明

THD200-18K



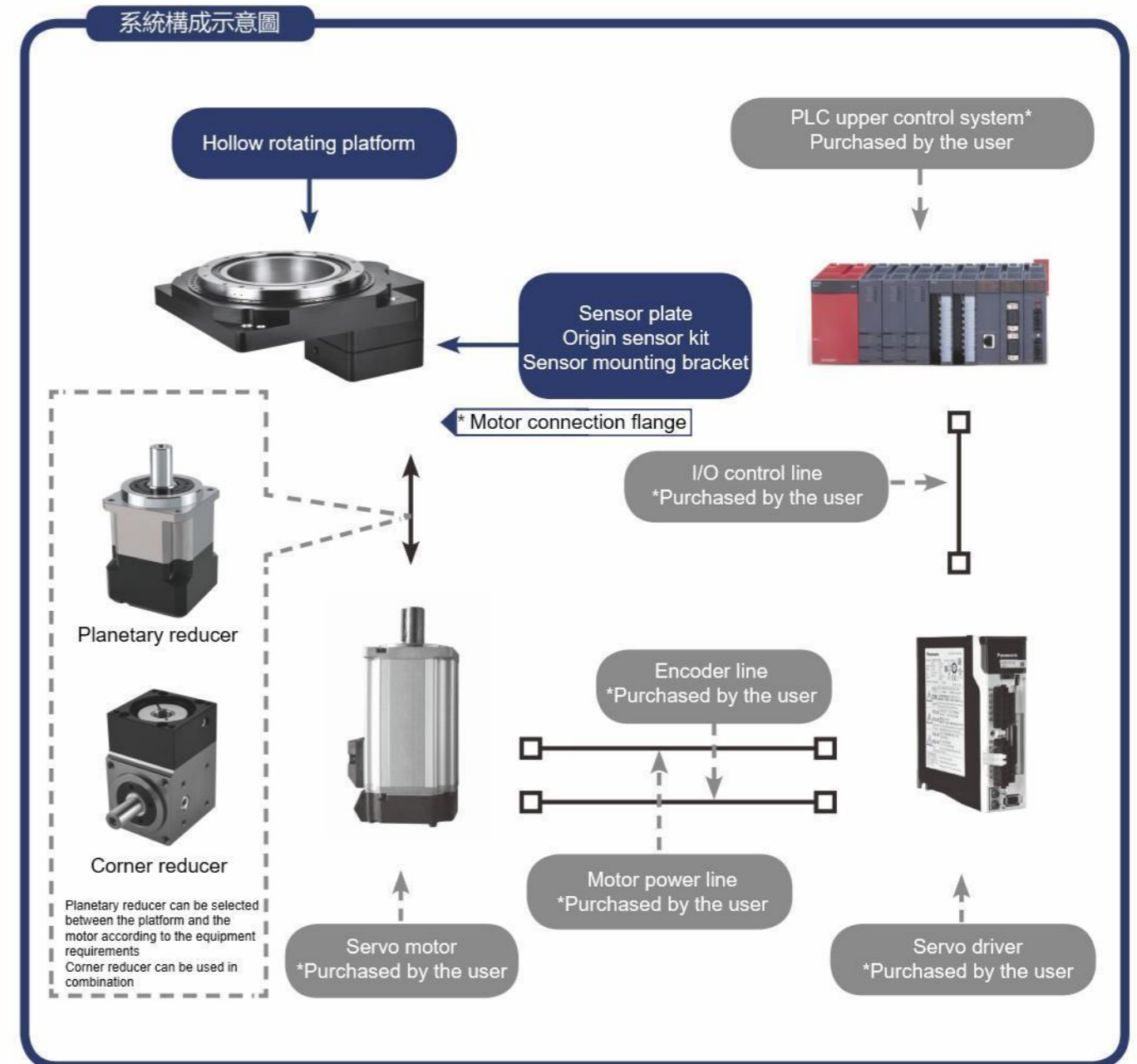
| Rotating platform bearing | Cross roller bearing | Applicable motor | 130 frame servo |
|---------------------------------|----------------------|---------------------------------|-----------------|
| Reduction ratio | 1:18 | Allowable axial pressure | 12000N |
| Allowable radial load | 9000N | Rotating platform flatness | ±0.01mm |
| Allowable disk speed | 100rpm | Rotating platform concentricity | ±0.01mm |
| Repeatable positioning accuracy | ±5arcsec | Precision life | 20000hr |
| Positioning accuracy | ±20arcsec | Protection level | IP50 |
| Allowable Rotational torque | 550Nm | | |

温馨提示：盘面输出转速高于100rpm/min.请订货前说明

中空旋转平台系统构成

Composition of Hollow Rotating Platform System

| Standard accessories | |
|--------------------------|----------------------------|
| hollow rotary actuator*1 | Origin sensor kit* 1 |
| Sensor plate *1 | Sensor mounting bracket* 1 |



*選購配件：以上選購配件僅供參考，用戶可根據設備需求選擇搭配購買。

中空旋转平台与马达安装说明

Installation instructions for hollow rotating platform motor

Motor Installation Instructions

First, match the size of the motor and the rotating platform

Remove the screw plug on the adapter flange and adjust the position, until the fastening bolts can be seen.

Adjust the position of the motor and the adapter flange and gently tighten the fastening bolts until the locking ring no longer rotates idly.

Preliminary diagonal fastening bolts, after completing step ③, refer to the tightening torque standard Ta, and tighten the fastening bolts.

Refer to the tightening torque standard Tb, and tighten the fastening bolts.

Tighten the screw plug.

Note 1: How to install the motor

Pull out the mechanical key, adjust the position of the locking ring so that its slot is aligned with the slot of the rotating platform input shaft, then apply grease to the platform input shaft hole and the motor shaft, insert the motor shaft, align the mechanical key slot with the locking ring slot, so as to tighten the locking ring fastening bolt to the maximum extent and make the connection more secure.

If the motor shaft diameter is too small to match the platform input shaft hole, a sleeve can be added for adjustment. The installation method is the same as the motor installation method with mechanical key. You only need to put the sleeve in and align it with the slot of the locking ring, and then tighten the locking ring fastening bolt.

Note 2: Wrench bolt tightening torque

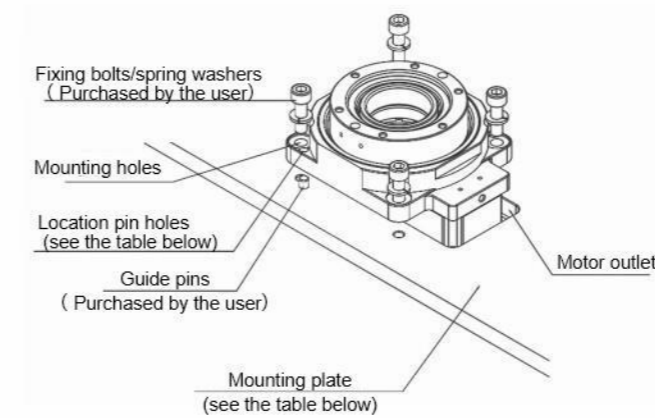
| Wrench bolt size | Motor installation Ta (8.8T) | | Locking ring installation Tb (12.9T) | |
|------------------|------------------------------|--------|--------------------------------------|--------|
| | N.m | kgf.cm | N.m | kgf.cm |
| M3 | 1.28 | 13 | 2.15 | 22 |
| M4 | 2.9 | 30 | 4.95 | 50 |
| M5 | 5.75 | 59 | 9.7 | 99 |
| M6 | 9.9 | 101 | 16.5 | 168 |
| M8 | 24 | 245 | 40 | 408 |
| M10 | 48 | 489 | 81 | 826 |
| M12 | 83 | 846 | 140 | 1428 |
| M14 | 132 | 1346 | 220 | 2243 |
| M16 | 200 | 2039 | 340 | 3467 |

中空旋转平台安装说明

Installation instructions for hollow rotating platform

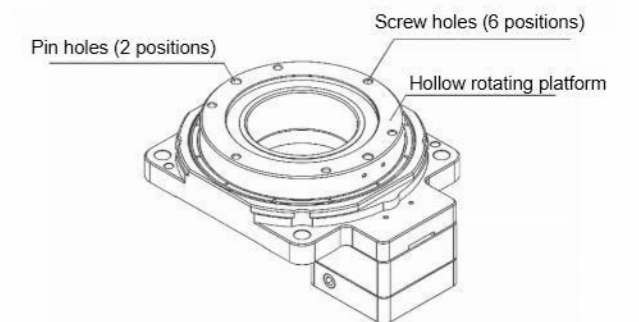
◆ How to install the hollow rotating platform

Leave a motor outlet on the machine mounting plate to expose the motor. Use the 2 locating pin holes to mount the hollow rotating platform to the machine mounting plate shown in the figure below. These mounting holes are used to accurately position the hollow rotating platform on the machine. Be sure to securely fix the locating pins to the mounting plate.



◆ How to install the load on the hollow rotating platform

Use the 6 mounting screw holes on the hollow rotating platform to install the load. There are 2 pin holes on the hollow rotating platform for mounting the load, which can be used to determine the position of the load. Be sure to securely fix the locating pins to the load.



中空旋转平台选购要点

Key points for purchasing hollow rotating platforms

◆ Calculate Load/Load moment of inertia (Jw)

Load moment of inertia must be less than 30 times the moment of inertia of the transmission device.

◆ Calculate the acceleration torque (T.) Refer to the following formula

$$Ta[N \cdot m] = (J_M + J_A + J_w) * \frac{\pi}{30} * \frac{(N_2 - N_1)}{t}$$

JM: Motor moment of inertia [kg·m]

Jw: Load moment of inertia [kg·m]

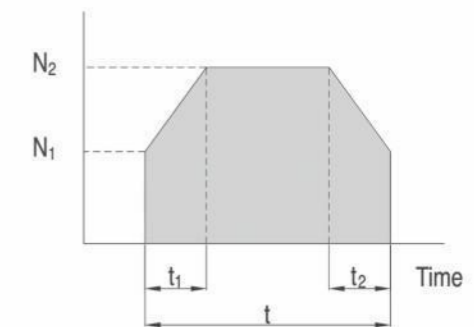
JA: Mechanism moment of inertia [kg·m]

Jw: Load moment of inertia [kg·m]

N2: Working speed [r/min]

N1: Starting speed [r/min]

t: Acceleration (deceleration) time [S]



◆ Calculate the required torque

The required torque is calculated by adding the load torque caused by friction resistance and the acceleration torque caused by the moment of inertia multiplied by the safety factor.

Required torque T = (load torque [N.m] + acceleration torque [N.m]) x safety factor

= (TL + Ta) x S

Safety factor S is greater than 1.5.

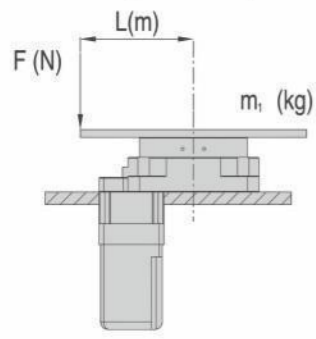
◆ The torque T required by the selected motor must be within the speed-torque specification range.

中空旋轉平臺選購要點

Key points for purchasing hollow rotating platforms

◆ Calculation of axial load and moment of inertia load

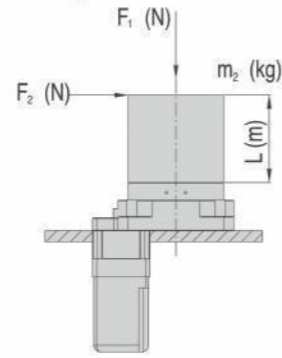
When applying loads to the hollow rotating platform as shown below, ensure that the axial load and moment of inertia load calculated using the following formula are within the specified range.



[N]: $F = F + m_1g$: Axial load [N]: $F = F + m_1g$

Moment of inertia load [N.m]: $M = FxL$

g: Gravitational acceleration 9.807 [m/s]



[N]: $F = F_2 + m_2g$: $F_t = F_2 + m_2g$

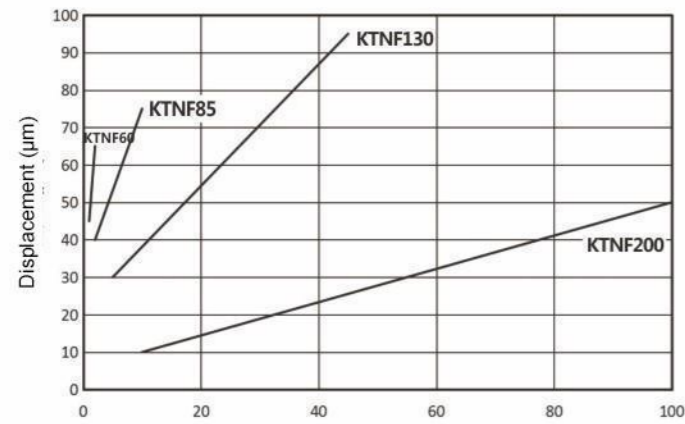
Moment of inertia load [N.m]: $M = F_2x(L+A)$

g: Gravitational acceleration

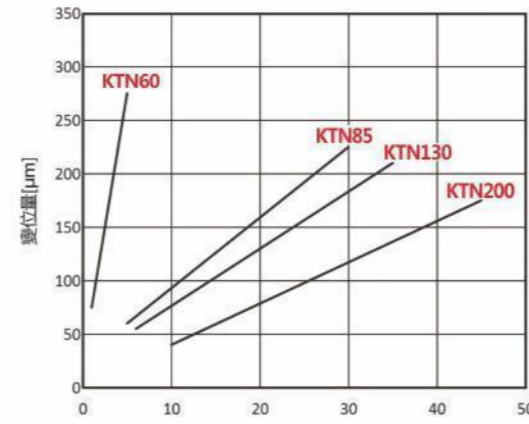
| 型號 | A |
|--------|-------|
| KTN60 | 0.010 |
| KTN85 | 0.015 |
| KTN110 | 0.015 |
| KTN130 | 0.017 |
| KTN170 | 0.025 |
| KTN200 | 0.033 |
| KTN280 | 0.055 |
| KTN370 | 0.090 |

◆ Platform rigidity reference

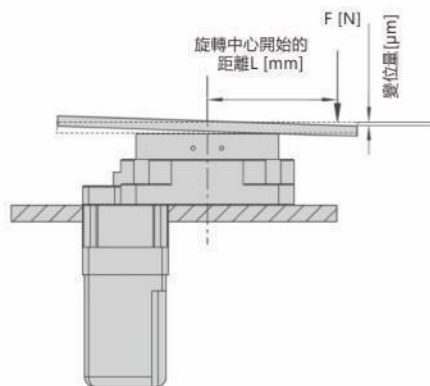
Different types of rotating platforms use different types of support bearings, which have a certain impact on the allowable inertia moment load of the rotating platform. That is, the larger the model, the greater the allowable inertia moment load. However, the displacement of the inertia moment load will be smaller. For details, please refer to the following chart (L=200mm).



TN series inertia moment load [N.m]



Distance from the rotation center L [mm]



Not just Circular motion

不仅仅是 圆周运动